

Renascor Resources Limited

ASX code: RNU

The Eastern Eyre Copper Project



Presented at the Mining
2014 Resources Convention
Brisbane, 29-30 October 2014
David Christensen, Managing Director

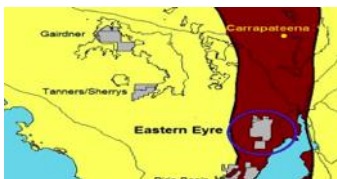
**M1 MINING
2014**

Investment summary



New Copper Discovery in South Australia

- High-grade mineralised system adjacent to untested fault zone
- Discovered in first target drilled – 1050 East prospect
- **13m at 1.45% Cu, 66 ppm Ag and 0.17% Co** (from 215m), including massive sulphide zone of **8m @ 2.2% Cu, 92 ppm Ag and 0.26% Co**



Dominant Position in Major Copper Belt

- +1,500 km² in Olympic Dam copper belt, South Australia
- Access restriction recently lifted in underexplored area
- Major control structures untested (+40 km strike-length)



Management Success in Target Region

- Strongly credentialed management with considerable experience
- Previous roles in South Australia
 - ✓ Discoveries: Carrapateena and Four Mile deposits
 - ✓ Management of Heathgate (Beverley uranium mine)



Follow-up Drilling Commencing November

- Extensions to high-grade massive sulphides at 1050 East
- First drill-testing of multiple high-priority prospects along-strike

Corporate profile

• ASX code	RNU
• Shares on issue	136.4m
• Options	6.2m ⁽¹⁾
• Cash (30 Sep 14)	~\$1.1m
• Share price (27 Oct 14)	\$0.028
• Market capitalisation	\$3.8m
• Enterprise Value	\$2.7m
• Top 20 shareholding	58%
• Board shareholding	42%

(1) Option breakdown: 5,450,000 options @ \$0.24, expiring between 31 December 2014 and 17 February 2015; 750,000 @ \$0.054, expiring 30 April 2016



Board of Directors	
Stephen Bizzell (Chairman)	Chairman of corporate advisory and funds management group; previously Executive Director Arrow Energy
David Christensen (MD)	Experienced mining executive; former CEO/President of Heathgate Resources (mining/exploration) and Nuclear Fuels Corporation (marketing and trading)
Geoff McConachy	Geologist with +35 years experience; instrumental in discovery of Four Mile (U) (Prospector of the Year), Fosterville (Au) and Potosi (base metal)
Chris Anderson	Geophysicist with +30 years experience; instrumental in discovery of Carrapateena (IOCG), Osborne (Cu-Au), Kalkaroo (Cu-Au-Mo) and Gokona (Au)
Andrew Martin	Investment banker, with +15 years experience in infrastructure/resource sector

Olympic Dam Belt

Major copper province

Prominent Hill

210 Mt @ 1.22% Cu
from ~100m depth, discovered 2001

Olympic Dam

9,500 Mt @ 0.82% Cu
from ~300m depth, discovered 1975

Carrapateena

800 Mt @ 0.80% Cu
from ~500m depth, discovered 2005

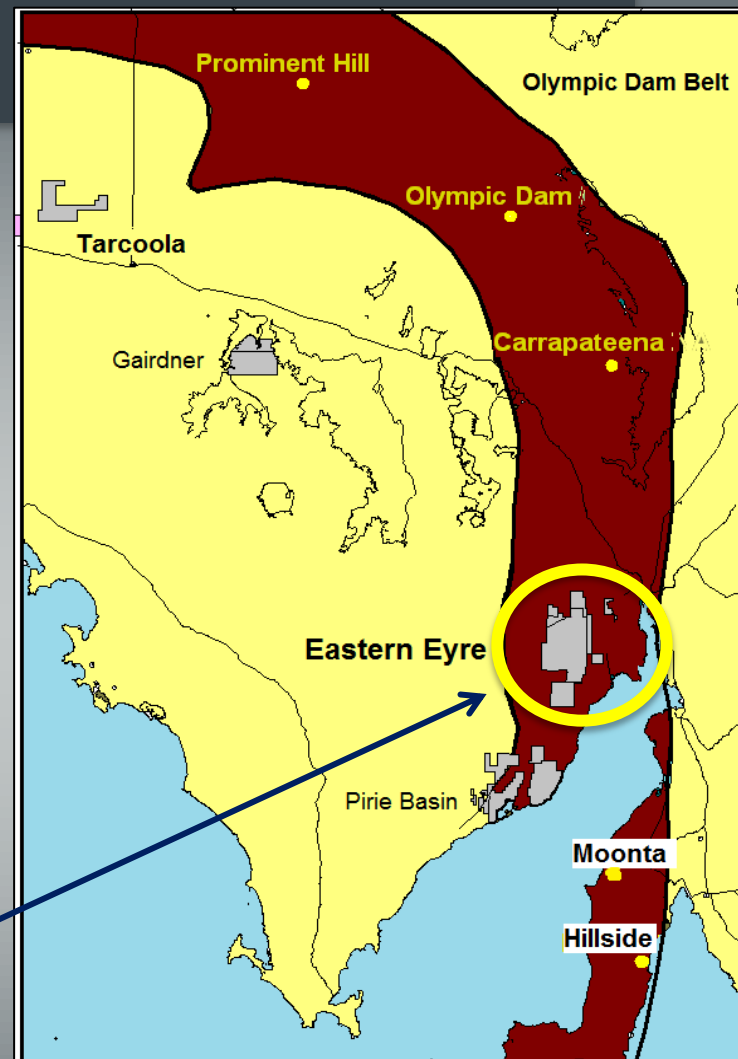
Hillside

330 Mt @ 0.6 % Cu
from <50m depth, discovered 2008

Renascor's Eastern Eyre Project

✓ +1,500km²

- ✓ Targeting similar large-scale copper resources from <50m cover depth
- ✓ Amongst shallowest cover sequences in region



Olympic Dam copper belt, showing location of Renascor's Eastern Eyre and other projects in relation to significant copper deposits

Eastern Eyre Project Overview

Tenements & ownership EL 4721, EL 5012 and EL 5236 (100%), EL 5400 and 5401 (option to earn 100%)

Access granted – 2013

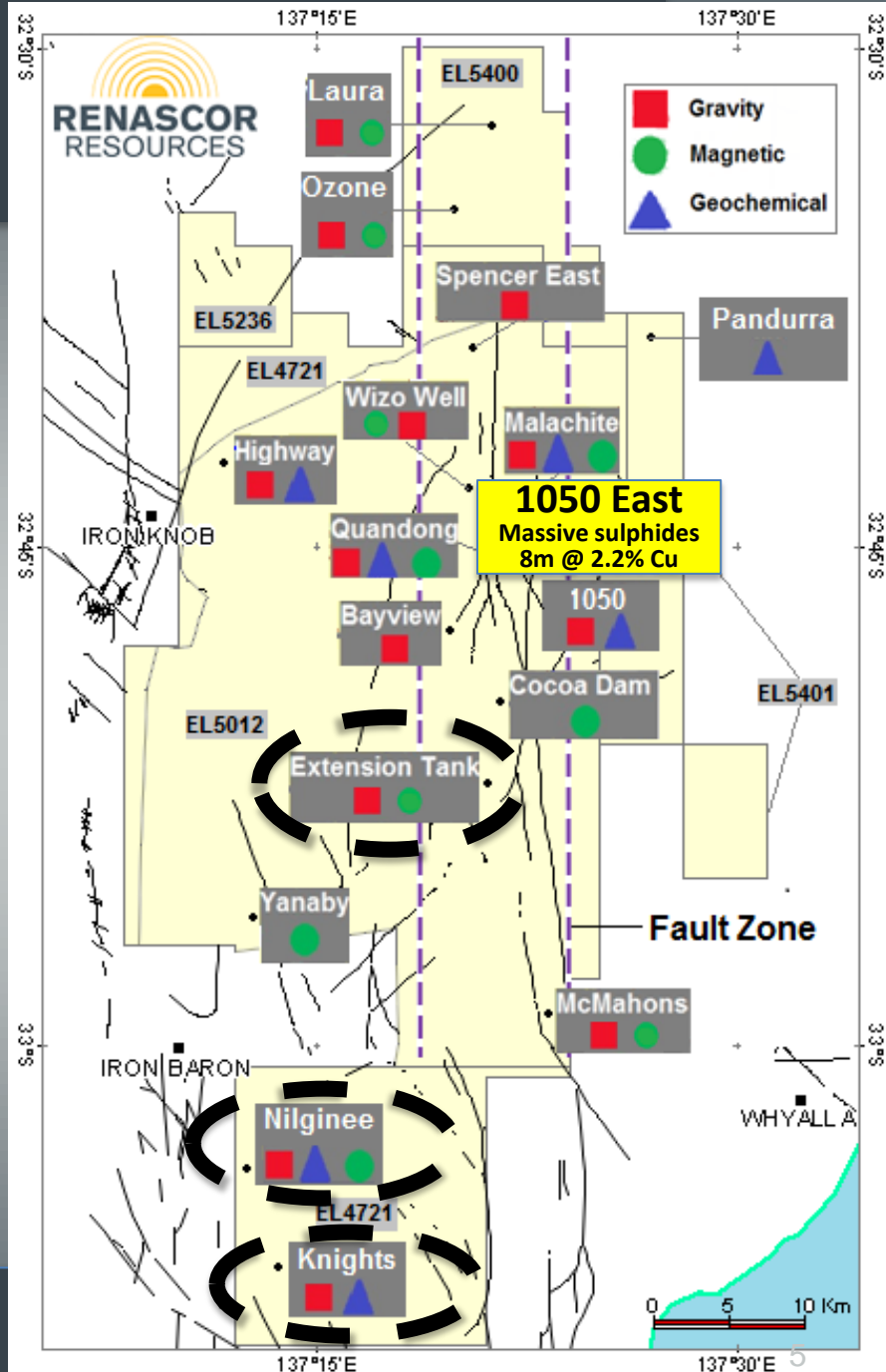
- ✓ Department of Defence restriction lifted
- ✓ Renascor commences first comprehensive exploration in +10 years

1050 East discovery – 2014

- ✓ High-grade grade copper, massive sulphides in first target drilled
- ✓ New discovery in untested fault
- ✓ Follow-on drilling next month

Major targets along-strike – 2014

- ✓ Multiple drill-ready targets from recent reconnaissance exploration
- ✓ Drilling to commence next month



Eastern Eyre Project

Compared to other large Cu deposits in region

Large copper deposits in South Australia	Renascor's Eastern Eyre Project
Location: Olympic Dam corridor	✓
Geology: Host rock associated with Hiltaba granites	✓
Geology: Gawler Range Volcanics	✓
Geological Age: Olympic Dam age (1590 Ma)	✓
Metals: Polymetallic (Cu-Ag-Co-Pb-Zn)	✓
Setting: Proximity to major structures	✓
Geophysics: Strong gravity/magnetic signature	✓
Mineralogy: IOCG-alteration	✓
Mineralisation: Extensive copper-mineralised halo	✓
Large-scale copper deposit	?

Geologic signature provides key similarities to large scale copper deposits in district

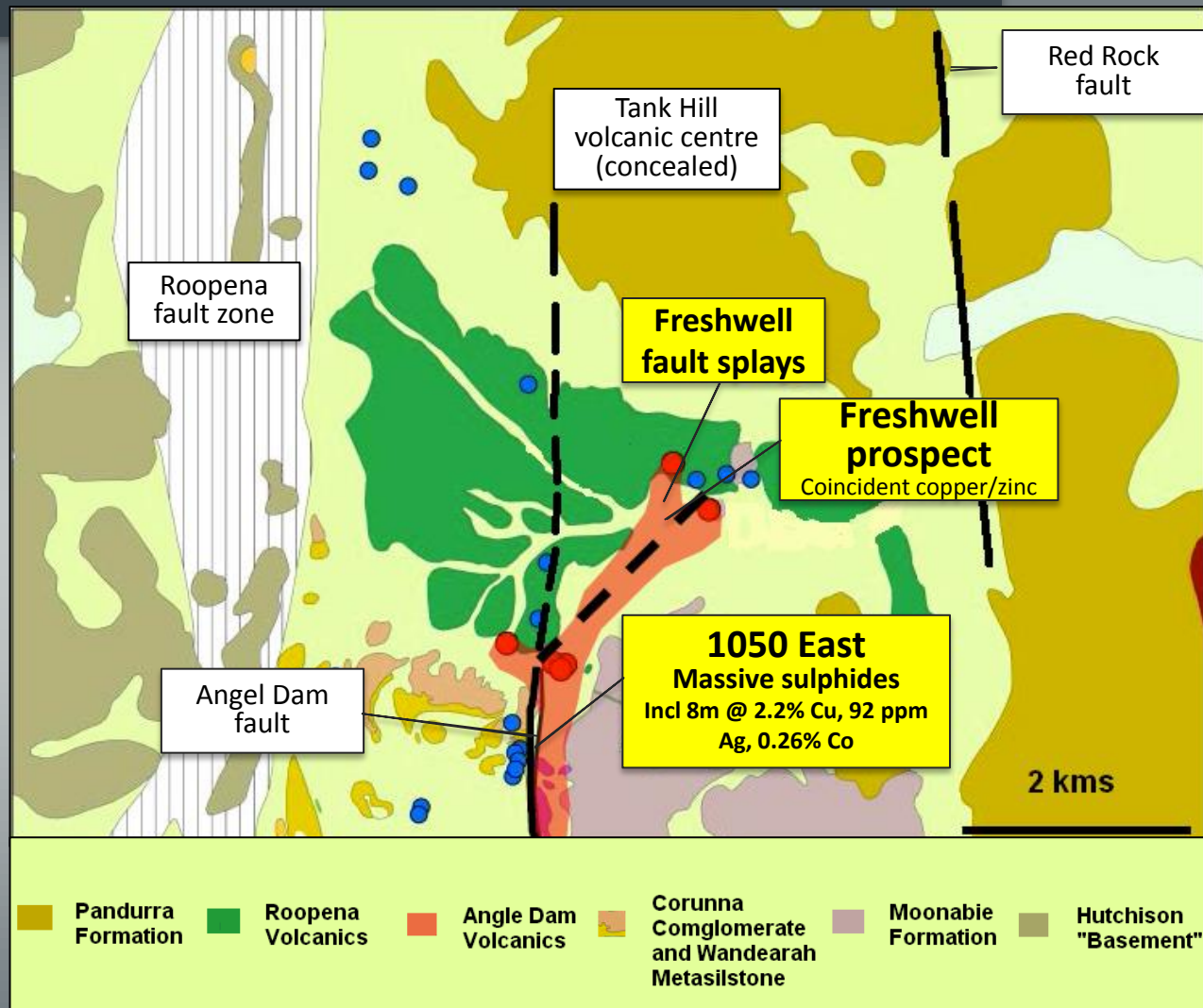
1050 East Geology

1050 East discovery in classic volcanogenic setting

- ✓ New mines department mapping study identifies Angle Dam volcanic sequence (shown in red)
- ✓ Volcanism controlled by NNE trending splays from Angle Dam fault
- ✓ RAB geochemistry suggests Freshwell fault splay is copper mineralised zone

**Mineralised target
zone largely
untested**

1050 East area, showing recently identified Freshwater fault splays and historic drill holes (in red and blue) (McAvaney and Wade)



1050 East

EEDD012 - massive sulphides



Hole EEDD012 – portion of massive sulphide interval from 217.5 metres to 221.5 metres

1050 East

Drill results

High-grade copper in first prospect drilled

- ✓ Massive sulphides
- ✓ Cu+Co+Ag
- ✓ Situated in southern portion of NNE Freshwell fault splays
- ✓ Large target zone for more massive sulphide development

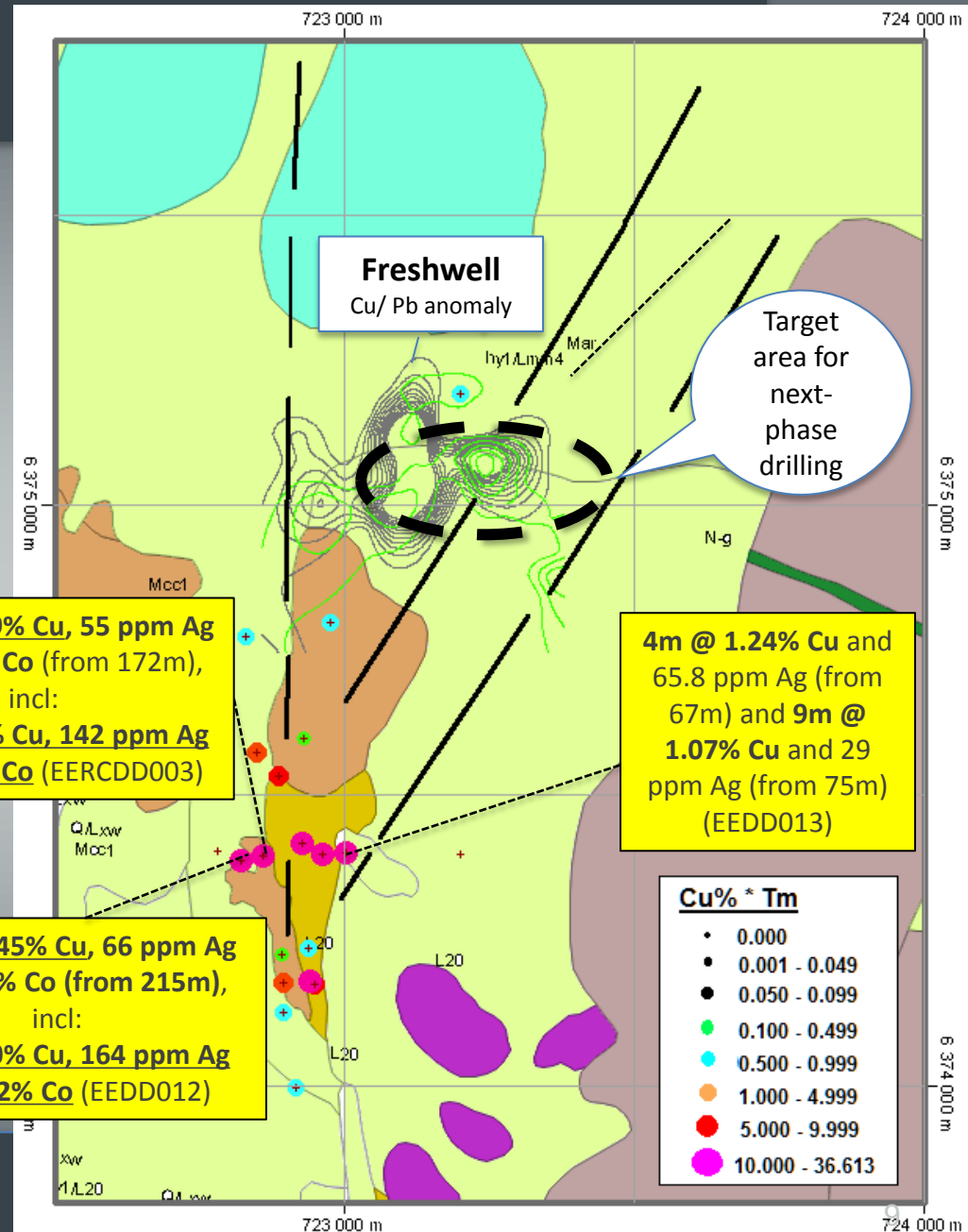
Follow-up drilling to commence next month

1050 East massive sulphide zone showing drill holes >125m, with significant results and RAB copper (green) and lead (grey) contours at Freshwell prospect

47m @ 0.59% Cu, 55 ppm Ag and 0.03% Co (from 172m), incl:
2m at 3.5% Cu, 142 ppm Ag and 0.03% Co (EERCDD003)

13m at 1.45% Cu, 66 ppm Ag and 0.17% Co (from 215m), incl:
3m @ 4.0% Cu, 164 ppm Ag and 0.42% Co (EEDD012)

4m @ 1.24% Cu and 65.8 ppm Ag (from 67m) and 9m @ 1.07% Cu and 29 ppm Ag (from 75m) (EEDD013)



Eastern Eyre Project

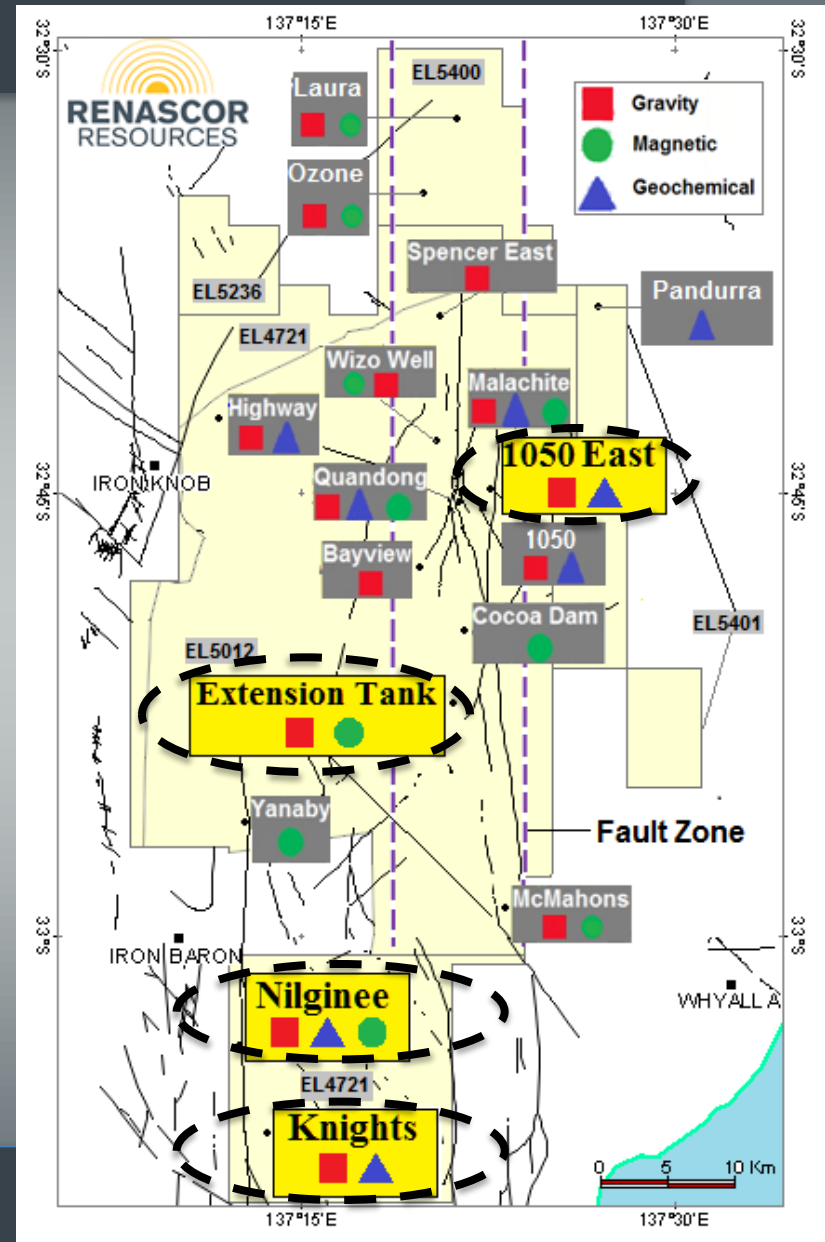
Immediate drill targets

Drill-ready copper targets along strike and adjacent to 1050 East

- ✓ Roopena-Angle Dam fault -- +40km, limited exploration
- ✓ High priority gravity/magnetic targets
- ✓ Recent surface sampling upgrades prospects
- ✓ 1050 East-style/IOCG

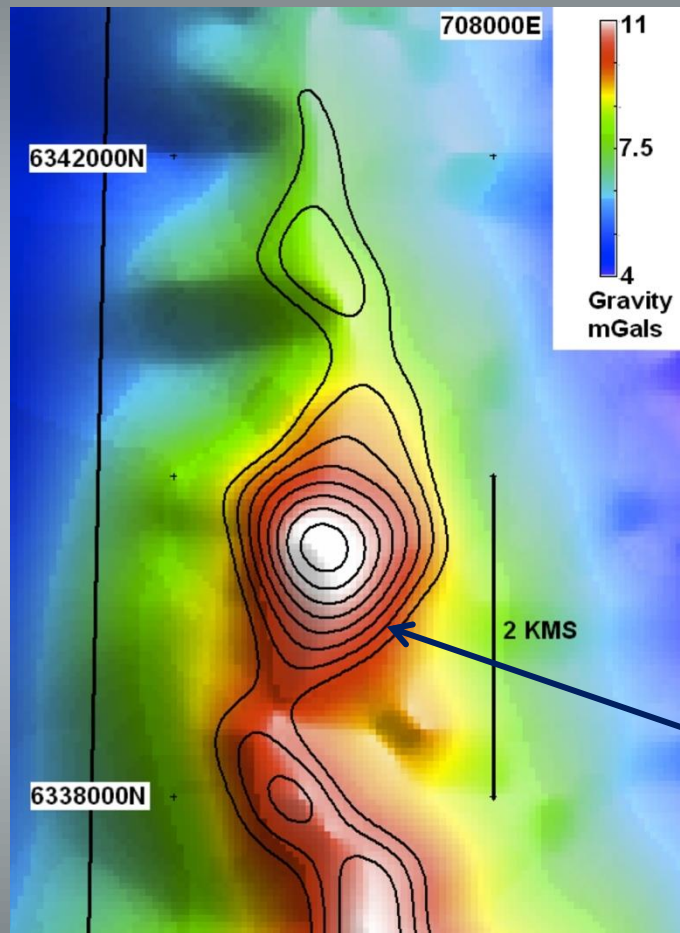
Drilling to commence next month

Eastern Eyre Project, showing prospect locations

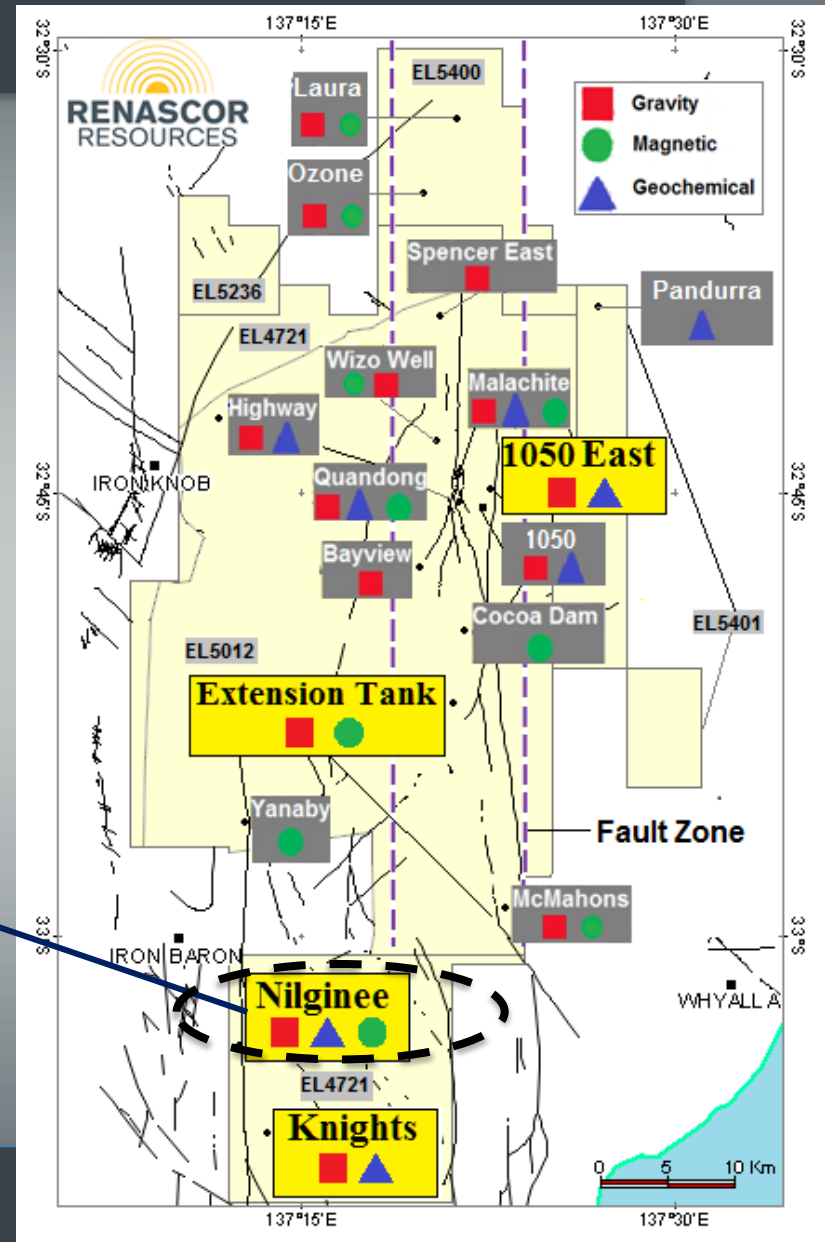


Eastern Eyre Project

Nilginee prospect

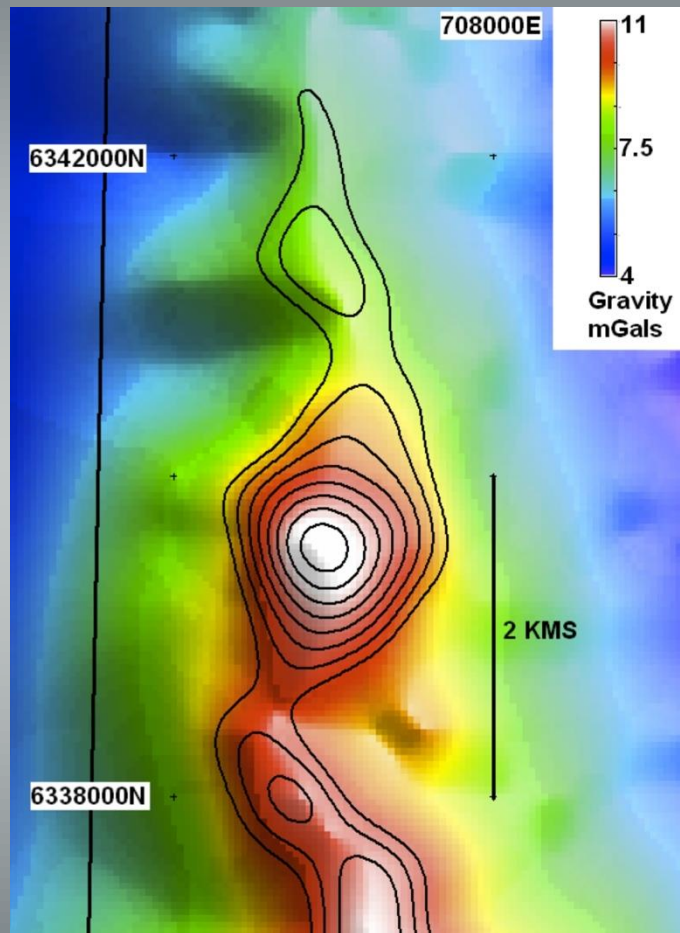


Nilginee, gravity contour image showing 0.5 Mgals intervals



Eastern Eyre Project

Nilginee prospect



Nilginee, gravity contour image showing 0.5 Mgal intervals

Large coincident gravity/geochemical anomaly

- ✓ +3MGal amplitude
- ✓ 3km strike-length
- ✓ Centre of gravity feature coincident with magnetic anomaly
- ✓ Along-strike from Arrium's Moola prospect
 - Copper-gold mineralisation within a stratabound hematite-albite-calcite-chlorite breccia

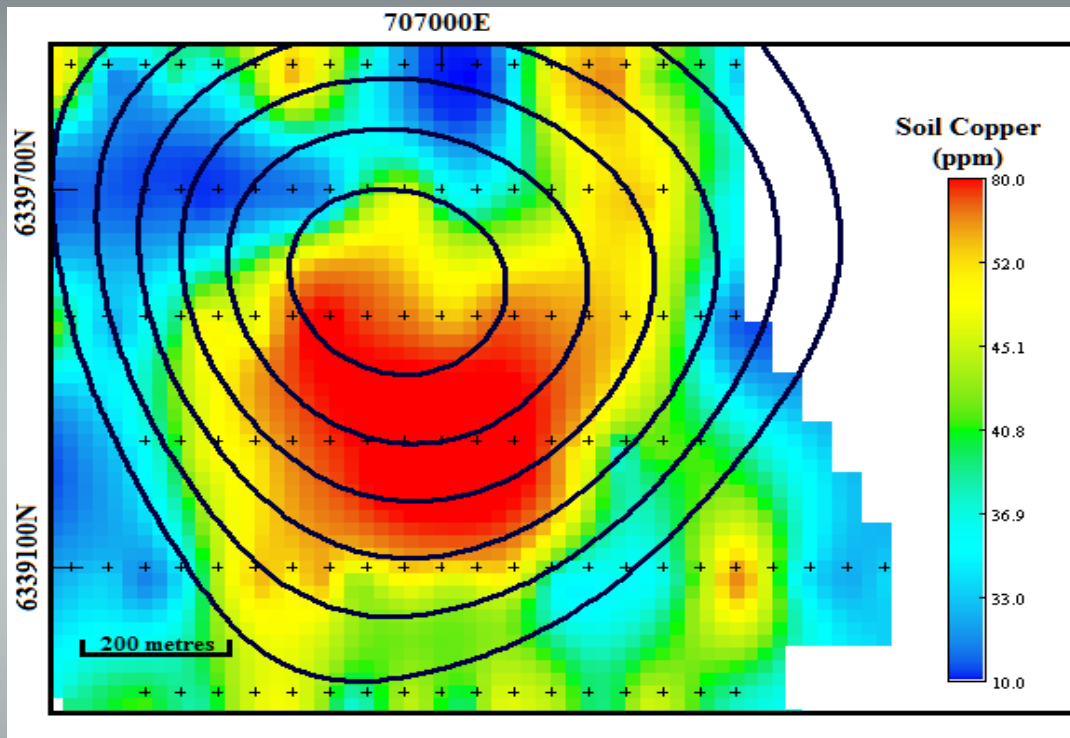
Eastern Eyre Project

Nilginee prospect

Recent geochemical work upgrades anomaly

- ✓ Anomalous copper (+50 ppm) from soils over 400m x 400m area
- ✓ Elevated lead, zinc, vanadium and titanium
- ✓ Coincident with gravity high
- ✓ Similar geochemical response to 1050 East

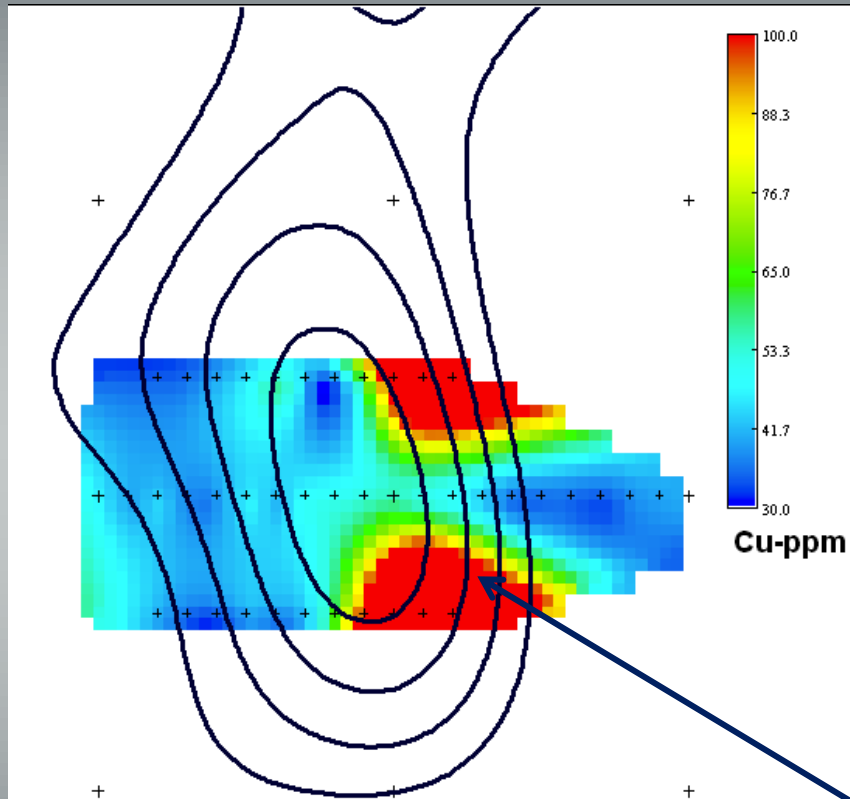
**Drilling to
commence next
month**



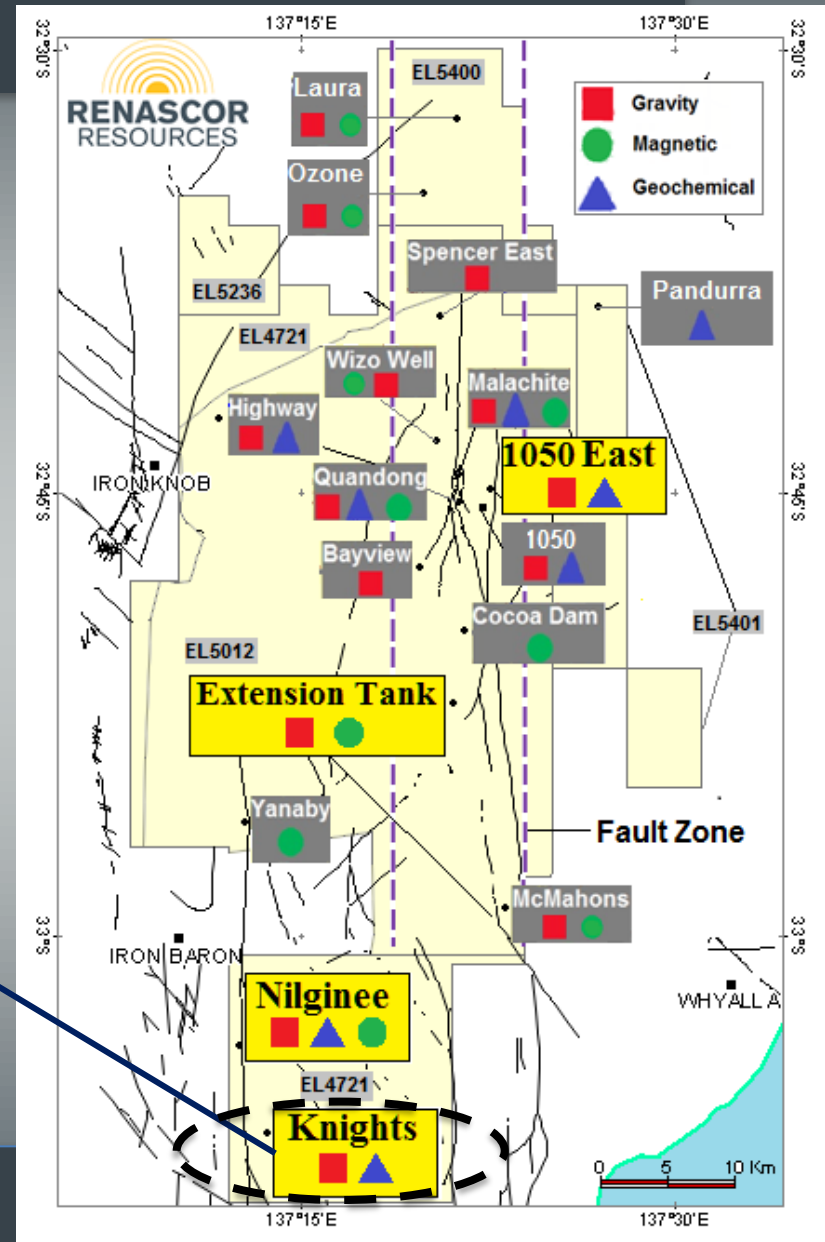
Nilginee prospect, showing copper in soils and residual gravity contours (0.5 Mgal intervals)

Eastern Eyre Project

Knights prospect

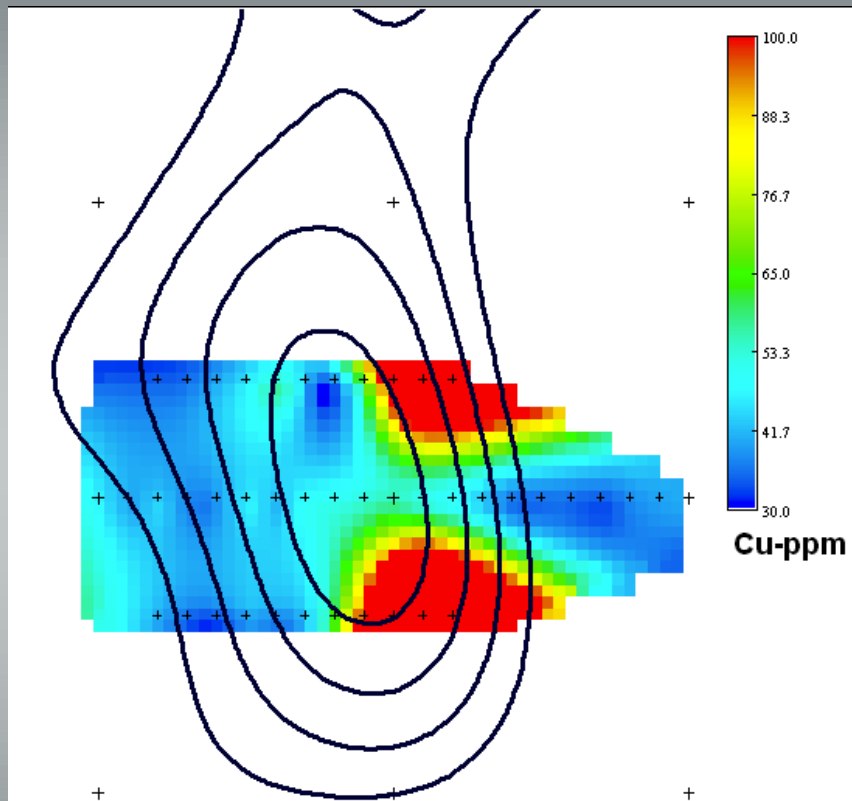


Knights prospect, showing copper in soils and residual gravity contours (0.5 Mgals intervals)



Eastern Eyre Project

Knights prospect



Knights prospect, showing copper in soils and residual gravity contours (0.5 Mgal intervals)

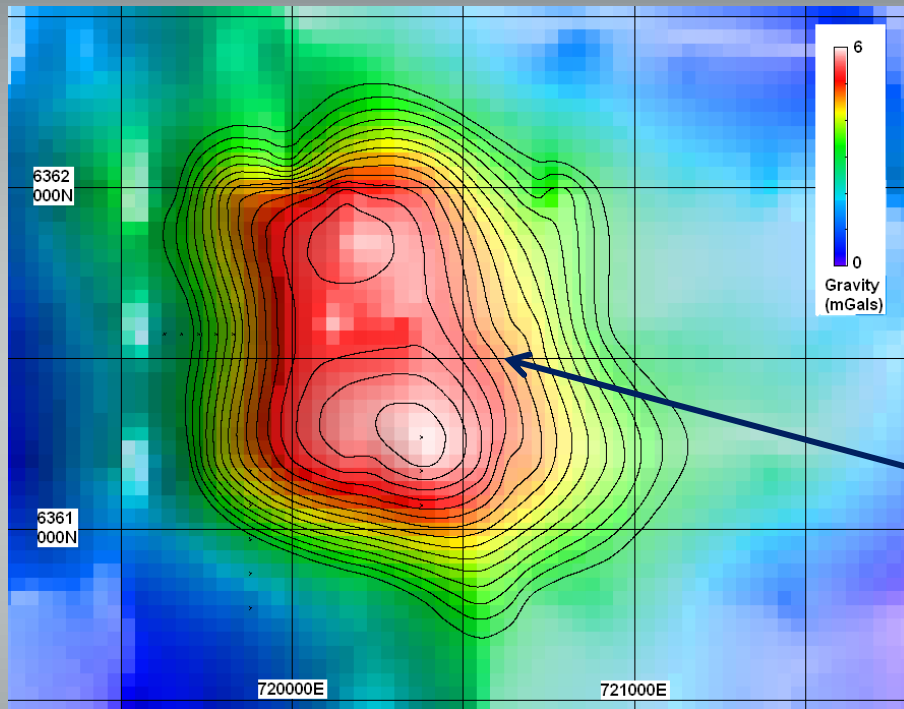
Coincident gravity/geochemical target

- ✓ South of Nilginee along fault trend
- ✓ High amplitude (3MGal) gravity target with coincident geochemistry
- ✓ Anomalous copper (+50 ppm) from soils over 400m of strike, open to south
- ✓ Maximum copper value: 477 ppm
- ✓ Similar geochemical response to 1050 East

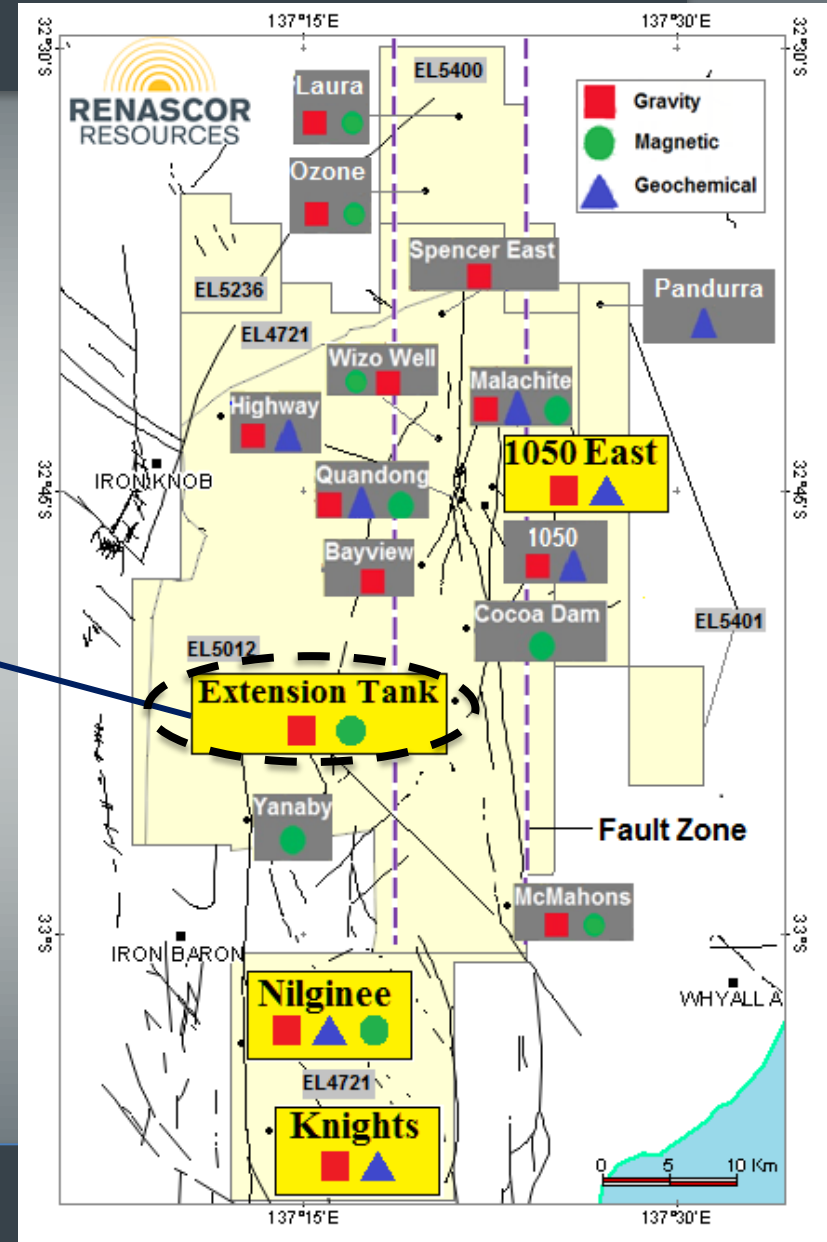
Drilling to commence next month

Eastern Eyre Project

Extension Tank prospect

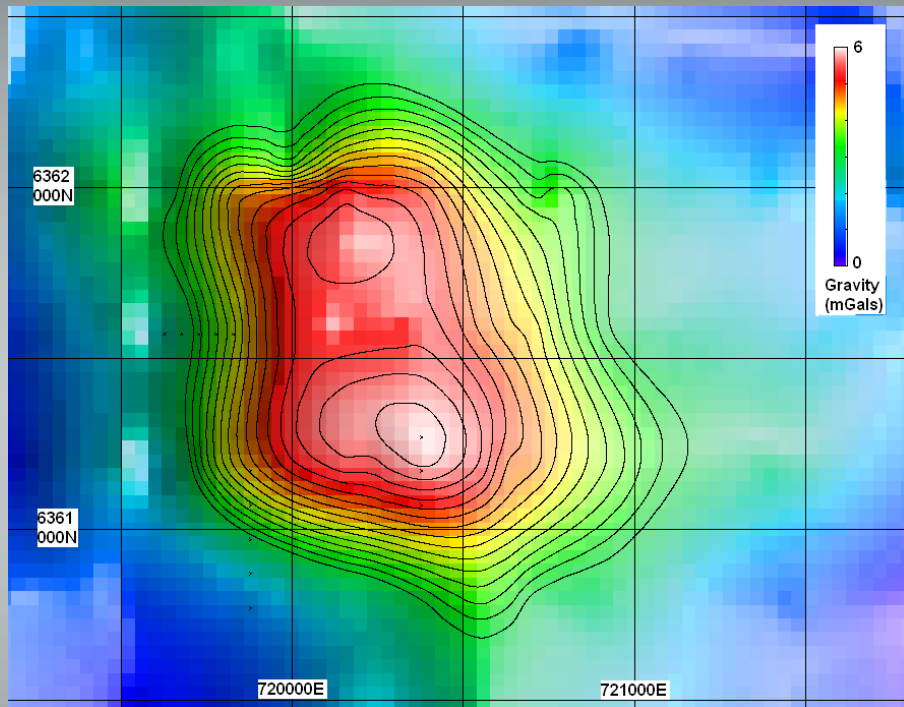


Extension Tank prospect, gravity contour image showing 0.5 Mgal intervals



Eastern Eyre Project

Extension Tank prospect



Extension Tank prospect, gravity contour image showing 0.5 Mgal intervals

Standout gravity target

- ✓ High amplitude (6MGal) gravity anomaly
- ✓ Discreet gravity signature within Roopena fault zone
- ✓ Coincident magnetic response in southern target area
- ✓ Limited shallow drilling over magnetised portion has not explained anomaly

Drilling to commence next month

Eastern Eyre Project

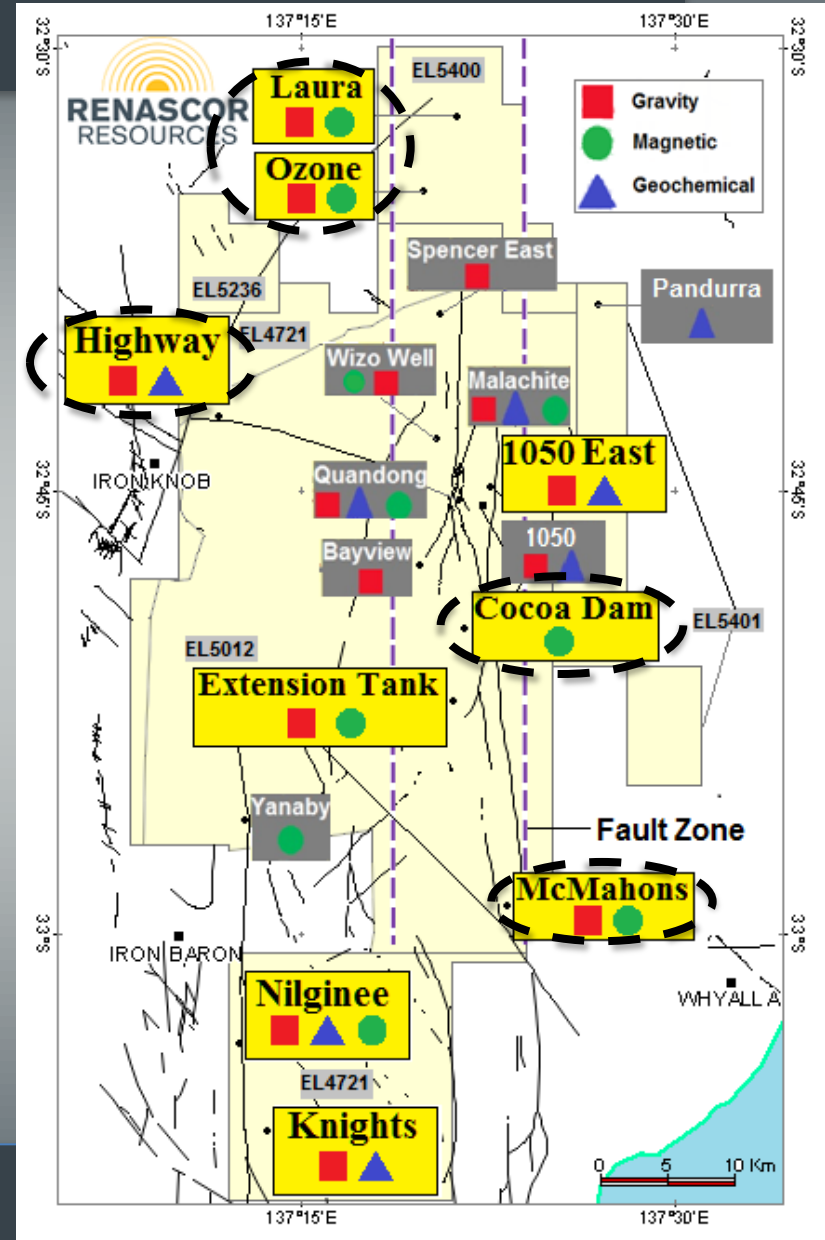
Target pipeline

Additional high-priority copper targets for 2015

- ✓ Roopena-Angle Dam fault -- +40km, limited exploration
- ✓ On-going reconnaissance programs have upgraded multiple gravity/magnetic targets
- ✓ Final approvals being sought for drilling in 2015

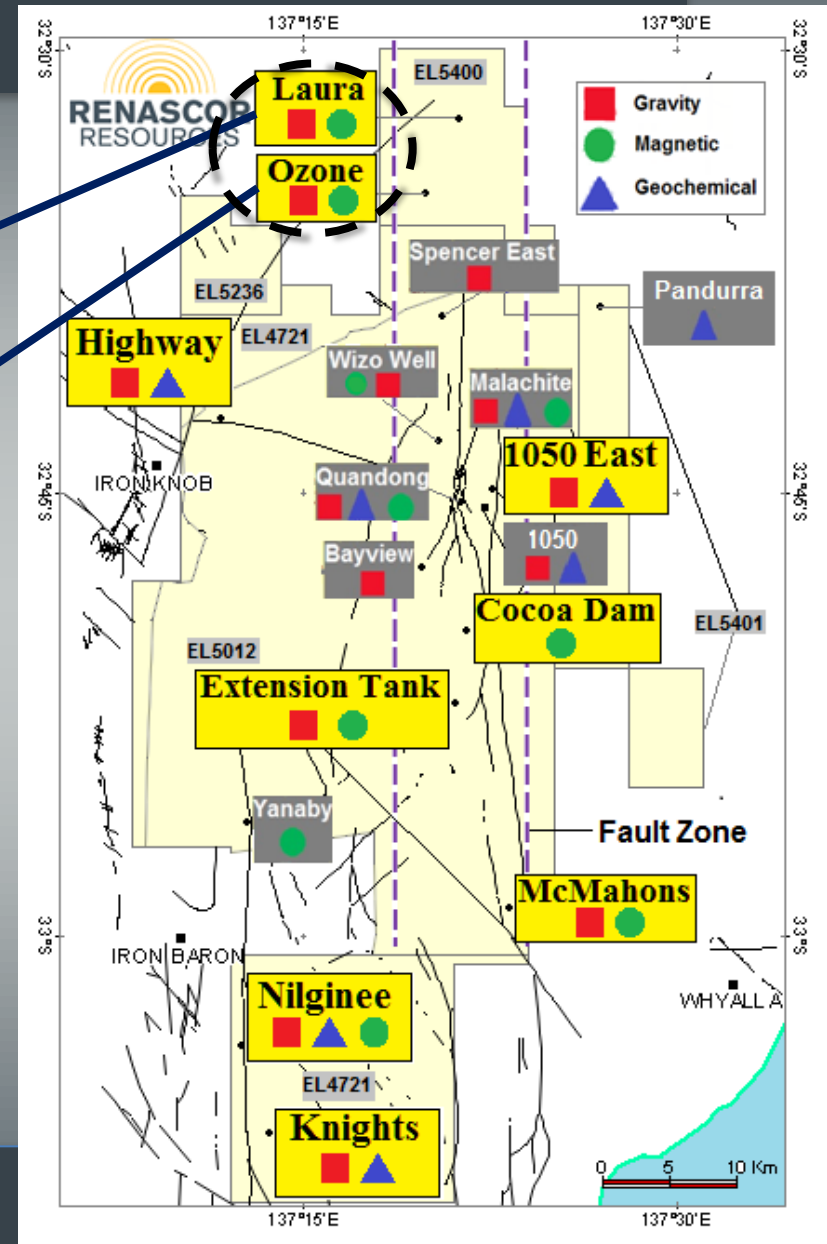
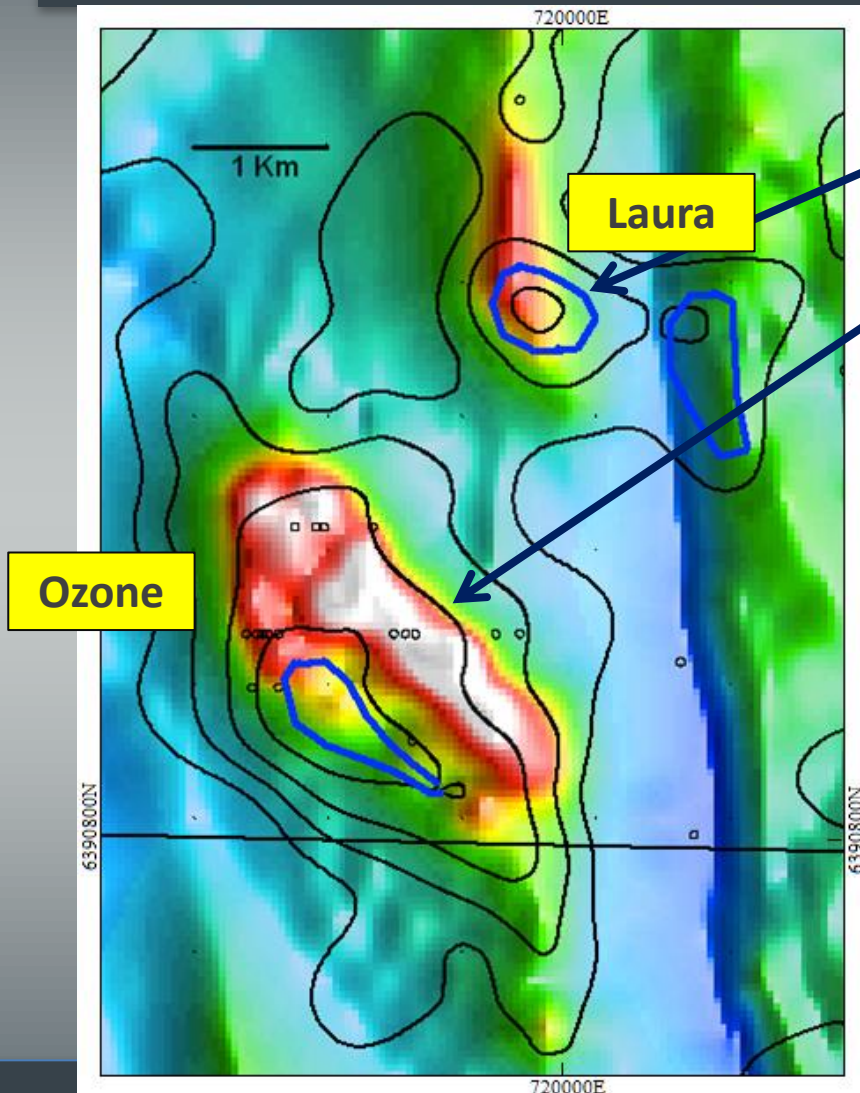
Pipeline of targets for subsequent drill programs

Eastern Eyre Project, showing prospect locations



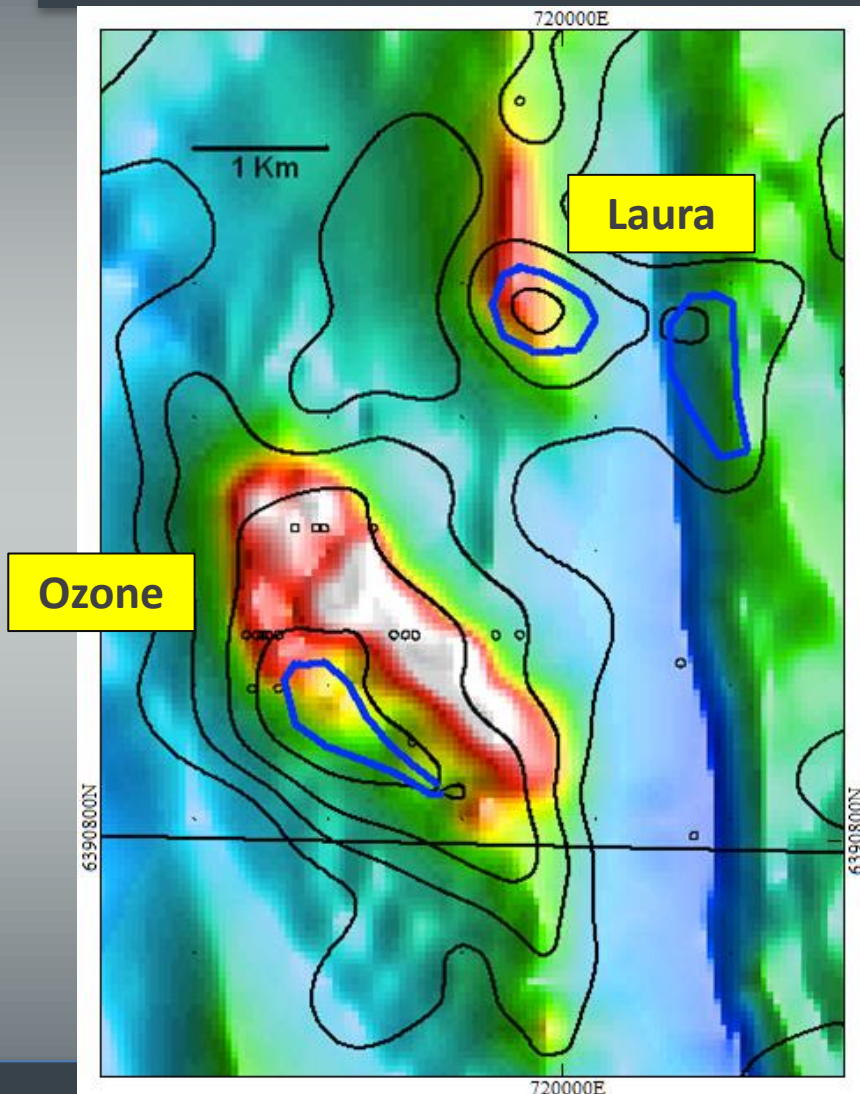
Eastern Eyre Project

Northern fault targets



Eastern Eyre Project

Northern fault targets



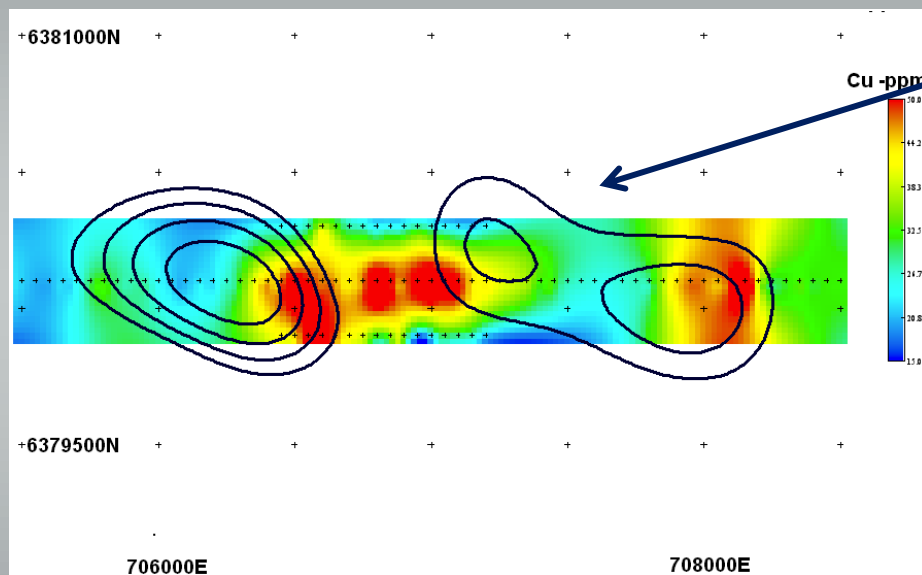
Ozone/Laura

- ✓ Coincident gravity/magnetic targets
- ✓ Along-strike from 1050 East
- ✓ Structural setting comparable to WMC's historic Spencer IOCG prospect, but with stronger geophysical response
- ✓ Limited previous drilling has returned anomalous copper, but not explained geophysical features

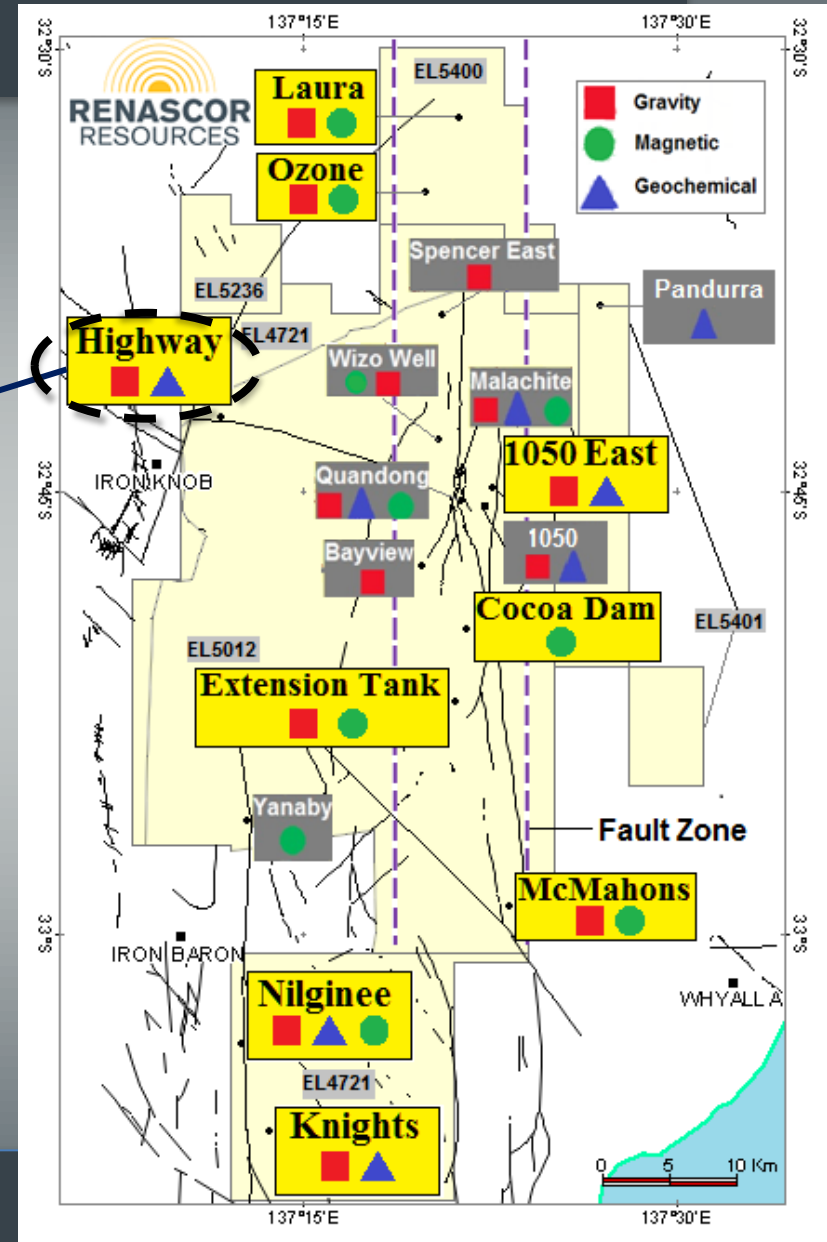
Aeromagnetic image with gravity contours over Ozone and Laura prospects showing 0.5 Mgal intervals

Eastern Eyre Project

Highway prospect

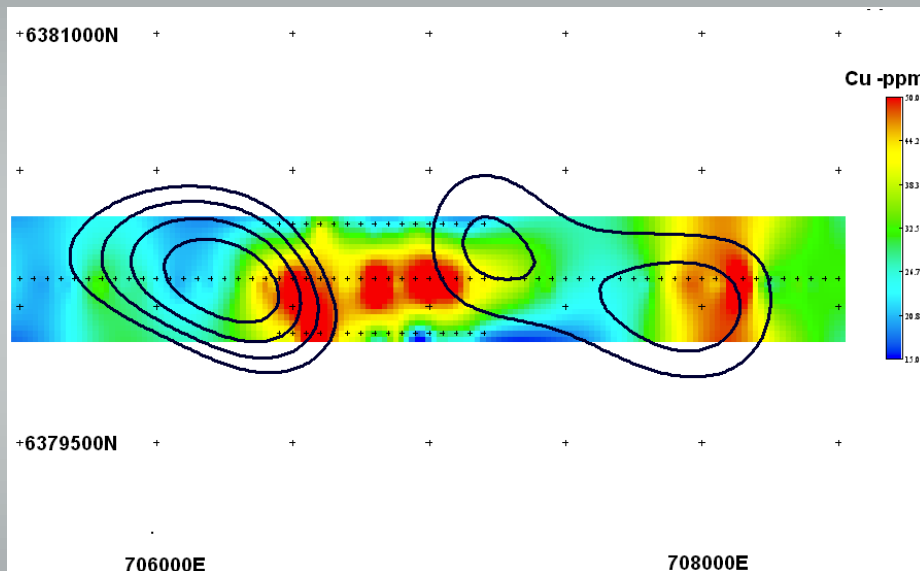


Highway prospect, showing copper in soils and residual gravity contours (0.5 Mgal intervals)



Eastern Eyre Project

Highway prospect



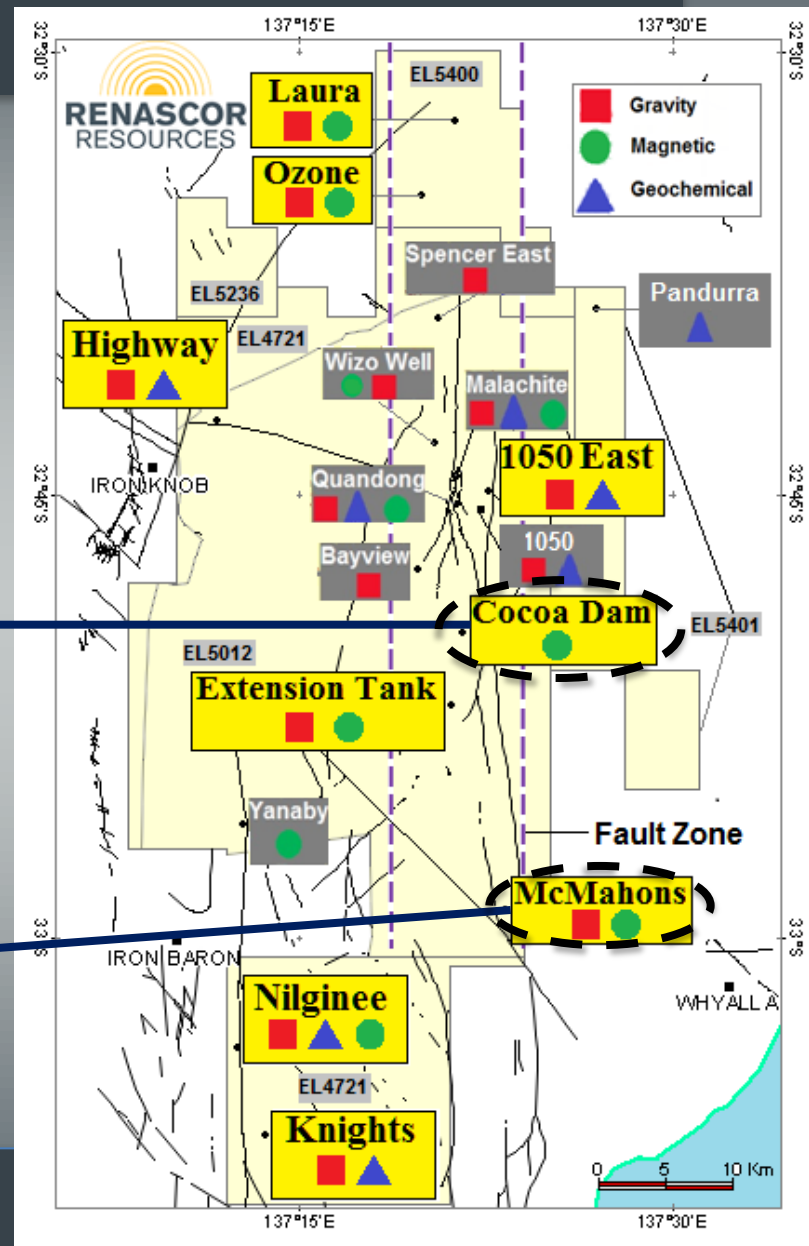
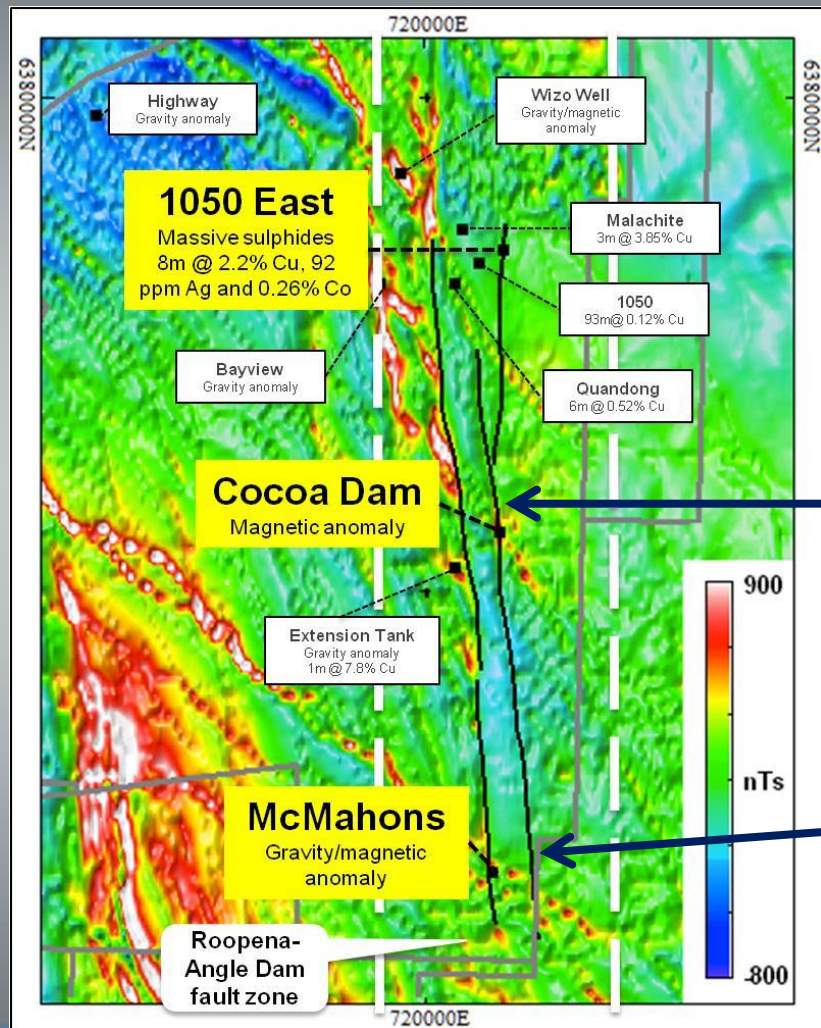
Highway prospect, showing copper in soils and residual gravity contours (0.5 Mgals intervals)

Coincident gravity/ geochemical target

- ✓ Northwest of 1050 East along regional fault trend
- ✓ Immediately northeast of Arrium's Iron Knob iron mine
- ✓ High amplitude (3MGal), 2km gravity target
- ✓ Anomalous copper (+50 ppm) from soils over gravity high
- ✓ Similar geochemical response to 1050 East

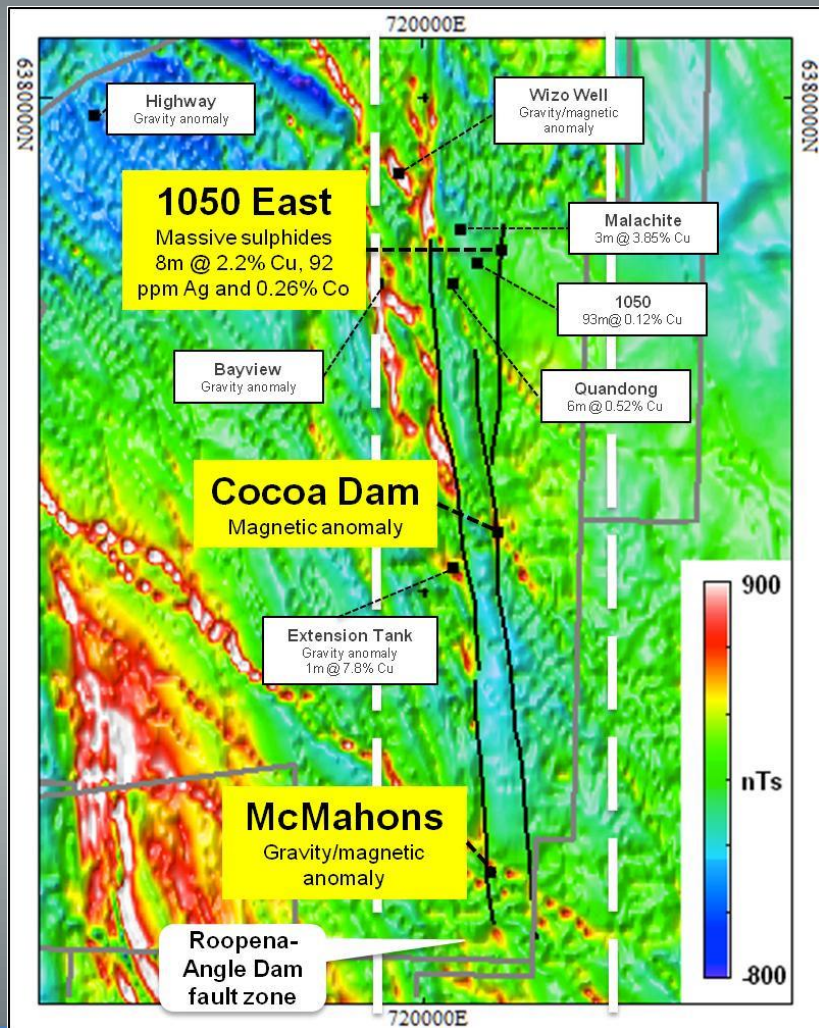
Eastern Eyre Project

Southern fault trend



Eastern Eyre Project

Southern fault trend



Untested geophysical targets

- ✓ Multiple prospects identified within fault trend along-strike from 1050 East
- ✓ Limited/no drilling
- ✓ Cocoa Dam: magnetic anomaly along Angle Dam fault trend
- ✓ McMahons: coincident gravity/magnetic target along parallel Roopena fault trend

Aeromagnetic image of central portion of Eastern Eyre project, showing location of McMahons and Cocoa Dam in relation to 1050 East and other prospects

Uranium Projects

Warrior and Frome

Portfolio includes low-cost opportunities to take advantage of increase in uranium price

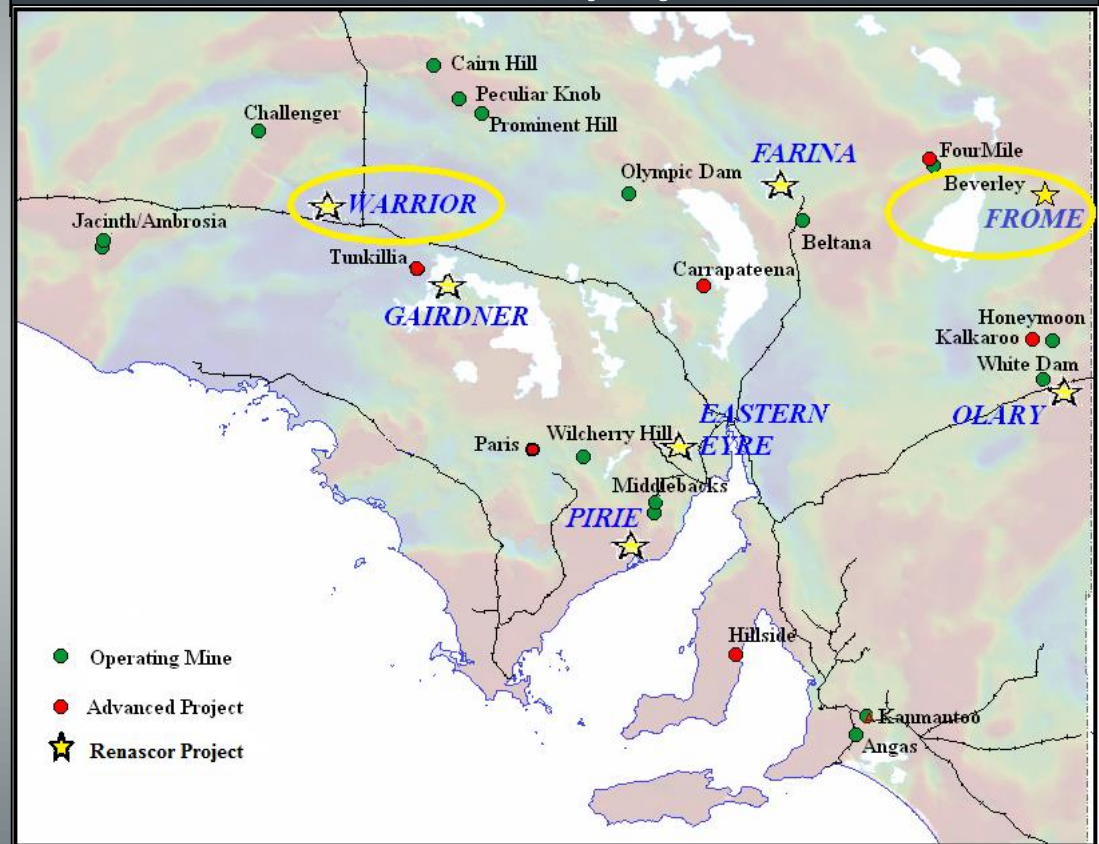
Warrior

- ✓ Advanced, historic uranium project
- ✓ Limited modern exploration
- ✓ Two-fold opportunity:
 - Modern exploration methods to recalibrate (and enhance) grade
 - Extend size through additional drilling of paleochannel

Frome

- ✓ Major strategic position near Beverley/Four Mile uranium mines
- ✓ Basement fault setting comparable to Four Mile
- ✓ Immediate drill targets

Location of Renascor's South Australian projects



Work Program for remainder 2014

1,000 meter RC drill program

- ✓ Follow-up drilling at 1050 East
- ✓ First-pass drilling at Nilginee, Knights, Highway
- ✓ Pipeline of targets for 2015

Drilling to commence next month



Summary

New copper discovery at 1050 East

- ✓ Major copper system
- ✓ Olympic Dam copper belt
- ✓ Management successful in target region
- ✓ Immediate follow-on drilling commencing November 2014

Pipeline of new, untested targets to be drill-tested commencing next month

Strong news flow from active drilling through 2014



Important notice

Forward Looking Statements

This Presentation may include statements that could be deemed “forward-looking” statements. Although Renascor Resources Limited (the “Company”) believes the expectations expressed in such forward-looking statements are based on reasonable assumptions, such statements are not guarantees of future performance and actual results or developments may differ materially from those expected in the forward-looking statements or may not take place at all.

No Offer to Sell or Invitation to Buy

This Presentation is not, and should not be considered to, constitute any offer to sell, or solicitation of an offer to buy, any securities in the Company, and no part of this Presentation forms the basis of any contract or commitment whatsoever with any person. The Company does not accept any liability to any person in relation to the distribution or possession of this Presentation from or in any jurisdiction.

Disclaimer

Whilst care has been exercised in preparing and presenting this Presentation, to the maximum extent permitted by law, the Company and its representatives make no representation, warranty or undertaking, express or implied, as to the adequacy, accuracy, completeness or reasonableness of this Presentation; accept no responsibility or liability as to the adequacy, accuracy, completeness or reasonableness of this Presentation; and accept no responsibility for any errors or omissions from this Presentation

Competent Persons Statement

The exploration results in this Presentation, insofar as they relate to mineralisation, are based on information compiled by Mr G. W. McConachy (fellow of the Australasian institute of Mining and Metallurgy) who is a director of the Company. Mr McConachy has sufficient experience relevant to the style of mineralisation and type of deposits being considered to qualify as a competent person as defined by the 2012 edition of the Australasian Code for Reporting of Exploration Results, Mineral Resources and Ore Reserves (the JORC code, 2012 edition). Mr McConachy consents to the inclusion in the report of the matters based on his information in the form and context in which it appears.