

Renascor Resources Limited

ASX code: RNU

New Copper Discovery in the Olympic Dam Copper Belt



Presented at the
Australian Copper Conference 2014

Brisbane, 17-18 June 2014

David Christensen, Managing Director



Important notice

Forward Looking Statements

This Presentation may include statements that could be deemed “forward-looking” statements. Although Renascor Resources Limited (the “Company”) believes the expectations expressed in such forward-looking statements are based on reasonable assumptions, such statements are not guarantees of future performance and actual results or developments may differ materially from those expected in the forward-looking statements or may not take place at all.

No Offer to Sell or Invitation to Buy

This Presentation is not, and should not be considered to, constitute any offer to sell, or solicitation of an offer to buy, any securities in the Company, and no part of this Presentation forms the basis of any contract or commitment whatsoever with any person. The Company does not accept any liability to any person in relation to the distribution or possession of this Presentation from or in any jurisdiction.

Disclaimer

Whilst care has been exercised in preparing and presenting this Presentation, to the maximum extent permitted by law, the Company and its representatives make no representation, warranty or undertaking, express or implied, as to the adequacy, accuracy, completeness or reasonableness of this Presentation; accept no responsibility or liability as to the adequacy, accuracy, completeness or reasonableness of this Presentation; and accept no responsibility for any errors or omissions from this Presentation

Competent Persons Statement

The exploration results in this Presentation, insofar as they relate to mineralisation, are based on information compiled by Mr G. W. McConachy (fellow of the Australasian institute of Mining and Metallurgy) who is a director of the Company. Mr McConachy has sufficient experience relevant to the style of mineralisation and type of deposits being considered to qualify as a competent person as defined by the 2012 edition of the Australasian Code for Reporting of Exploration Results, Mineral Resources and Ore Reserves (the JORC code, 2012 edition). Mr McConachy consents to the inclusion in the report of the matters based on his information in the form and context in which it appears.

Investment summary



New Copper Discovery

- High-grade mineralised system adjacent to untested fault zone
- Discovered in first target drilled – 1050 East prospect
- **13m at 1.45% Cu, 66 ppm Ag and 0.17% Co** (from 215m) (EEDD012)
- Potential for large-scale, near-surface copper resource



Dominant Ground Position

- +1,500 km² in Olympic Dam copper belt, South Australia
- Angle Dam and Roopena faults – each 40km to 50km largely untested



Management Success in Target Region

- Strongly credentialed management with considerable experience
- Previous roles in South Australia
 - ✓ Discoveries: Carrapateena IOCG and Four Mile deposits
 - ✓ Management of Heathgate (Beverley uranium mine)



Major Follow-up Drill Targets

- Diamond drilling for high-grade massive sulphides
- Angle Dam fault targets over +40 km of strike

Corporate profile

- ASX code RNU
- Shares on issue 131.4m⁽¹⁾
- Options 6.2m⁽²⁾
- Cash (31 Mar 14) ~\$1.0m⁽³⁾
- Share price (12 Jun 14) \$0.050
- Market capitalisation \$6.6m
- Enterprise Value \$5.6m⁽³⁾
- Top 20 shareholding 64%⁽¹⁾
- Board shareholding 41%⁽¹⁾

(1) Excludes ~5m conditional shares (of which 3.2m to be issued to directors) from private placement announced 22 April 2014 (which are expected to be issued in late June 2014)

(2) Option breakdown: 5,450,000 options @ \$0.24, expiring between 31 December 2014 and 17 February 2015; 750,000 @ \$0.054, expiring 30 April 2016

(3) Excludes ~\$1.1m (less costs) raised through SPP and private placement

Board of Directors

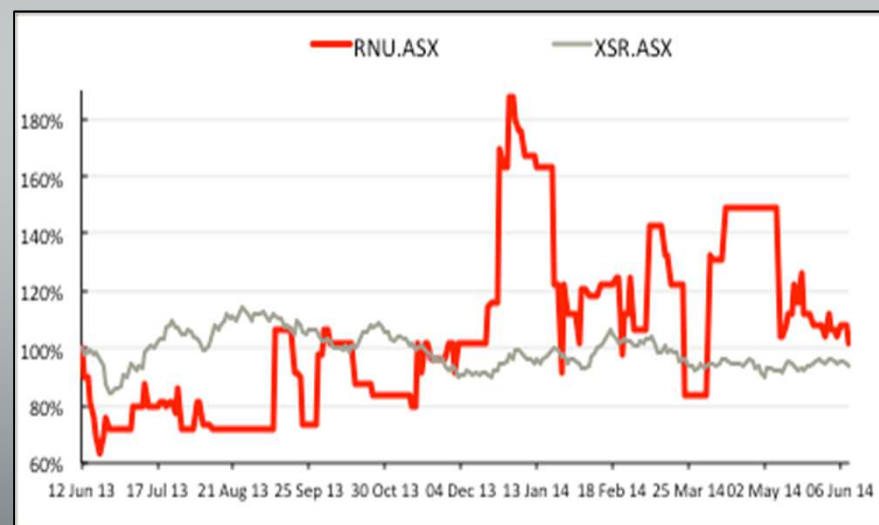
Stephen Bizzell (Chairman)

David Christensen (MD)

Geoff McConachy

Chris Anderson

Andrew Martin



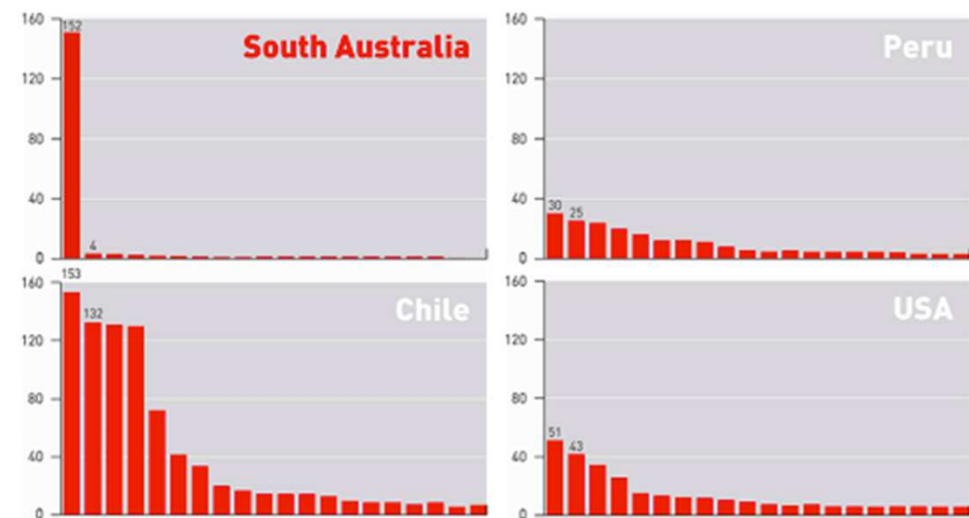
Copper in South Australia

Targeting new exploration prospects

- South Australian copper
 - One giant deposit (Olympic Dam)
 - Few mid-tier copper deposits
- Copper under-represented
 - South Australia *should* include more deposits
 - Australia's most significant copper discoveries since 2001
- New prospects at Eastern Eyre
 - New Cu-Co-Ag zone
 - Widespread copper mineralisation
 - Untested targets

Goal: Define new copper ore bodies at Eastern Eyre

**MINE SIZE (MILLION TONNES OF COPPER Equivalent):
SOUTH AUSTRALIA VS OTHER MAJOR COPPER DESTINATIONS**



Source: South Australian Department for Manufacturing, Innovation, Trade, Resources and Energy (DMITRE) presentation dated December 2012, citing CRU World Copper Conference, Santiago, 2012 Minex consulting, GSSA projects

Eastern Eyre Project Overview

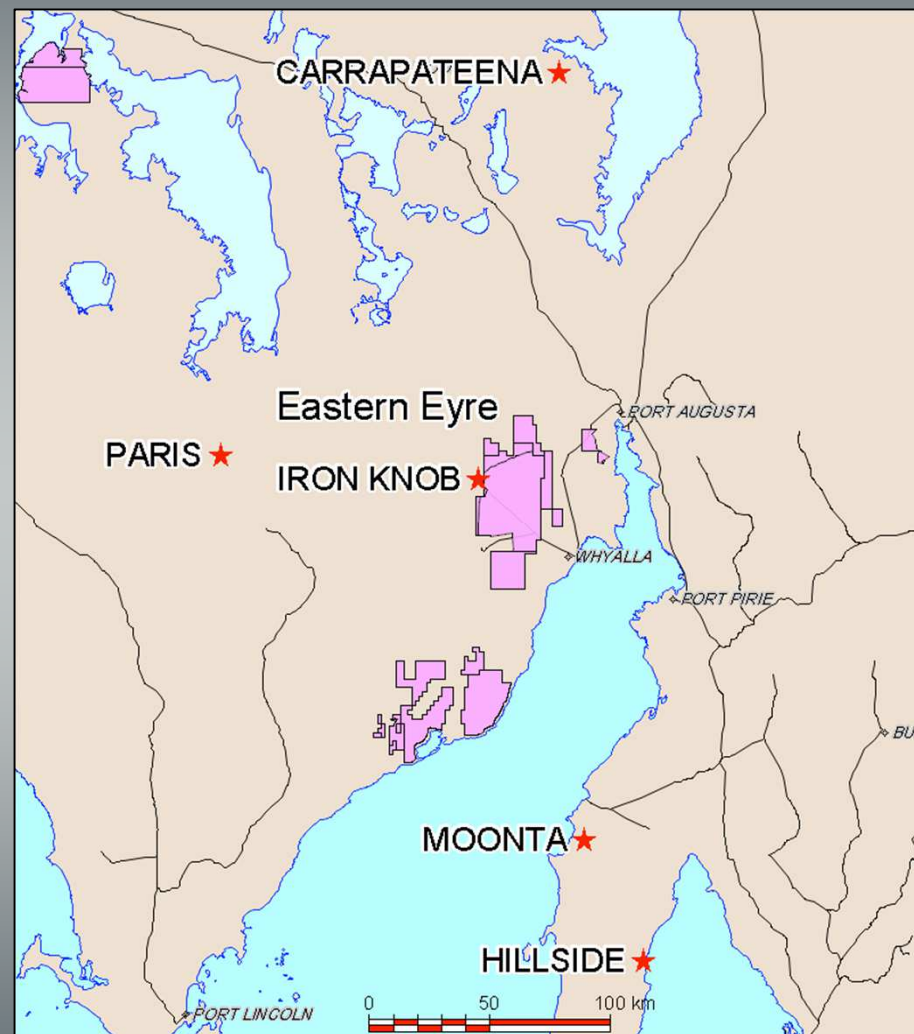
Tenements & ownership	EL 4721, EL 5012 and EL 5236 (100%), EL 5400 and 5401 (option to earn 100%)
Location	Southern Gawler Craton
Area	1,534 km ²
Primary target	Copper

Favourable exploration location

- ✓ Olympic Dam copper belt
- ✓ Highly prospective geology
- ✓ Large landholding (+1,500 km²)
- ✓ Near infrastructure
 - ~15km to Whyalla
 - ~25 km to Port Augusta
- ✓ Extensive data from historical shallow exploration
- ✓ Major untested targets

Key exploration hurdle cleared

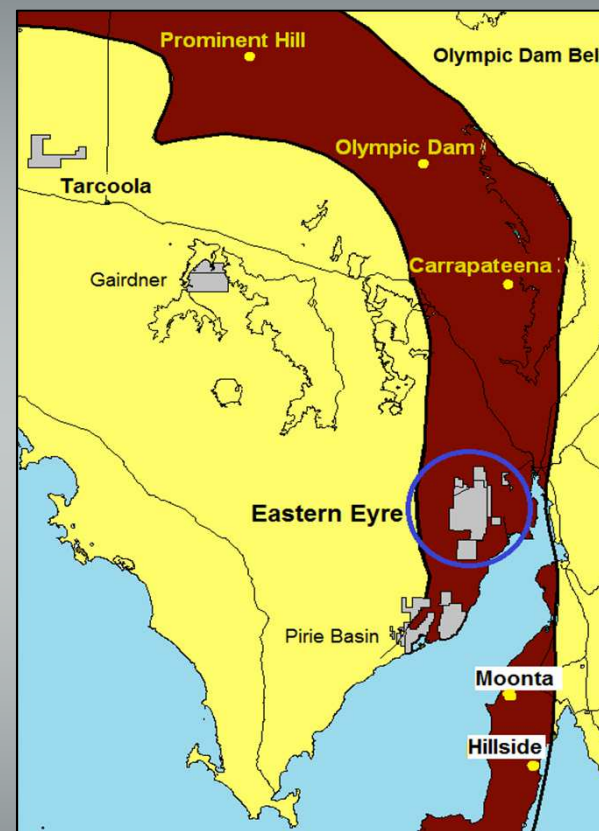
- ✓ Extensive shallow copper in initial drilling establishes copper pedigree of project area



Eastern Eyre Project

Compared to other large Cu deposits in region

Large copper deposits in South Australia	Renascor's Eastern Eyre Project
Olympic Dam corridor	✓
Host rock associated with Hiltaba granites	✓
Gawler Range Volcanics	✓
Olympic Dam age (1590 Ma)	✓
Polymetallic (Cu-Ag-Co-Pb-Zn)	✓
Proximity to major structures	✓
Strong gravity/magnetic signature	✓
IOCG-alteration	✓
Large-scale copper deposit	?



Prominent Hill

210 Mt @ 1.22% Cu
from ~100m depth
Discovered 2001

Olympic Dam

9,500 Mt @ 0.82% Cu
from ~300m depth
Discovered 1975

Carrapateena

800 Mt @ 0.80% Cu
from ~500m depth
Discovered 2005

Hillside

330 Mt @ 0.6 % Cu
from <50m depth
Discovered 2008

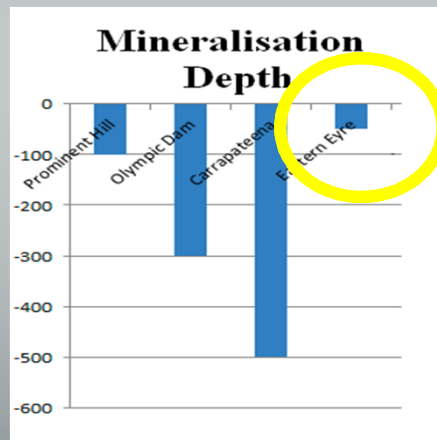
Olympic Dam copper belt, showing location of Renascor's Eastern Eyre and other projects in relation to significant copper deposits; total resource figures from MESA Journal 68, Issue 1 -2013 and updated company releases

Eastern Eyre Project

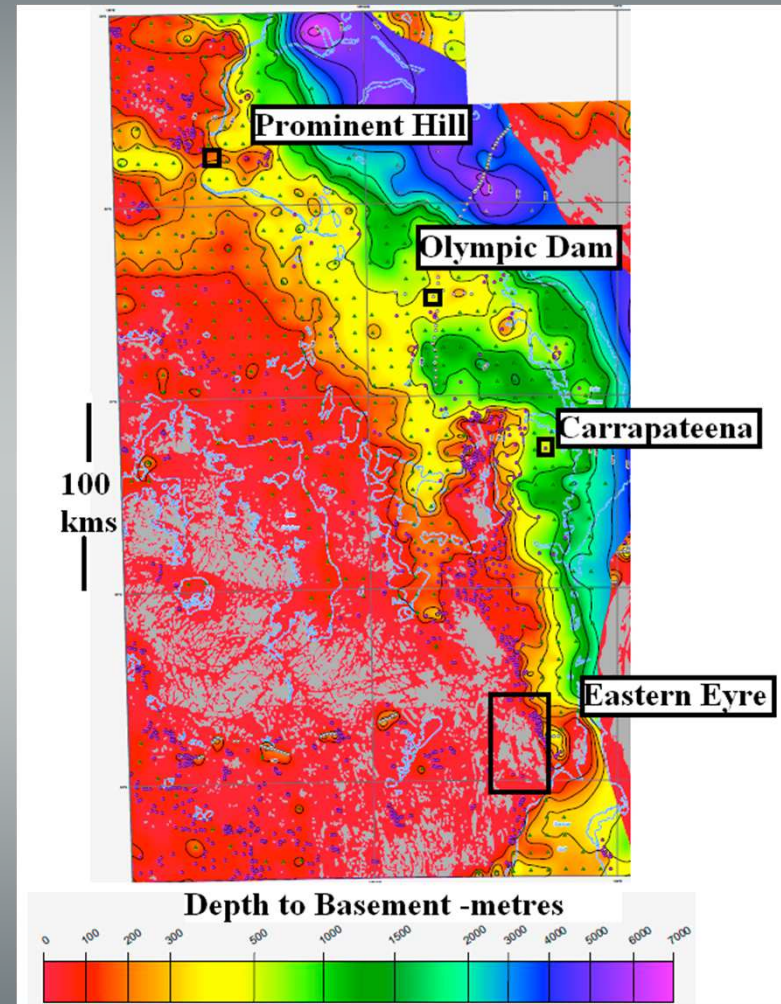
Shallow depth to basement

Eyre Peninsula: amongst the shallowest cover sequences in Olympic Dam belt

- Lower drilling costs
- More effective geophysics/geochem
- Potential open-cut mining



Olympic Dam copper belt (image right), showing depth to basement and key mineral deposits in relation to Renascor's Eastern Eyre Project (source: Meixner, A.J. and Roy, I.G. 2010. Depth to magnetic basement map of the Gawler-Curnamona region, South Australia (First Edition), 1:750,000 scale, Geoscience Australia, Canberra)



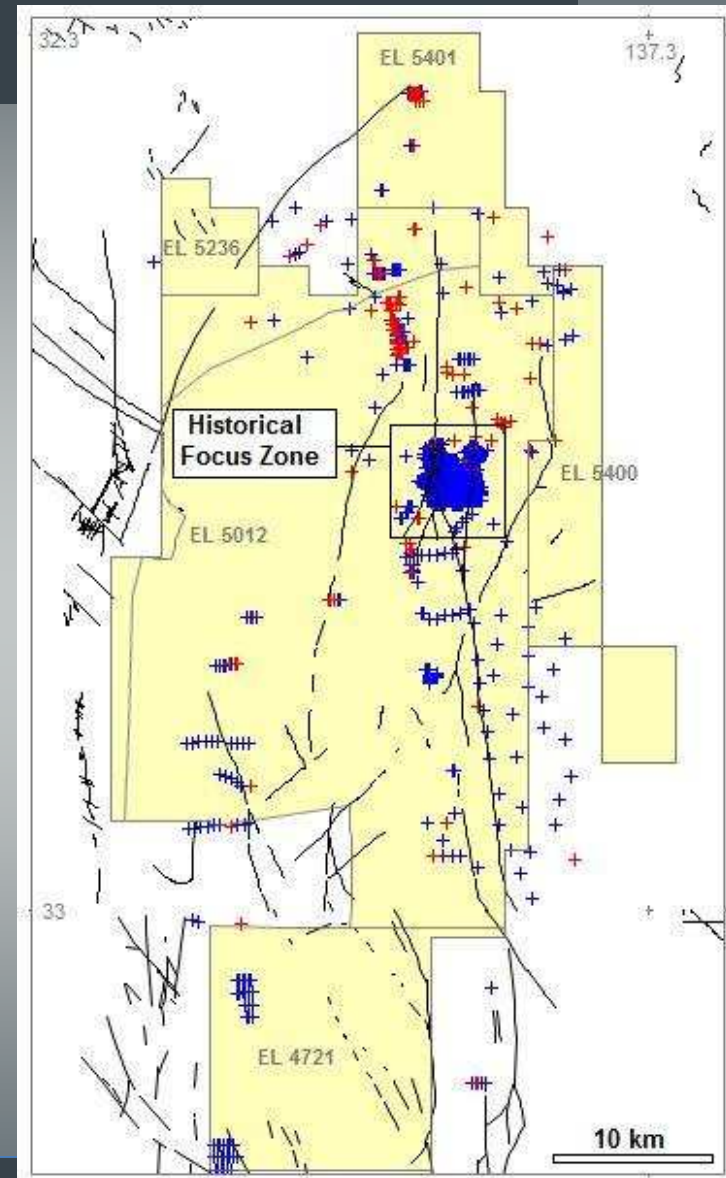
Eastern Eyre Project

Untapped potential

Historical exploration reveals potential

- 1960s to 1980s exploration focused on near-surface geochemical targeting
- Widespread near-surface copper

Eastern Eyre Project (image right), showing historical drilling (<60m in blue; ≥60m in red) and interpreted faults



Eastern Eyre Project

Untapped potential

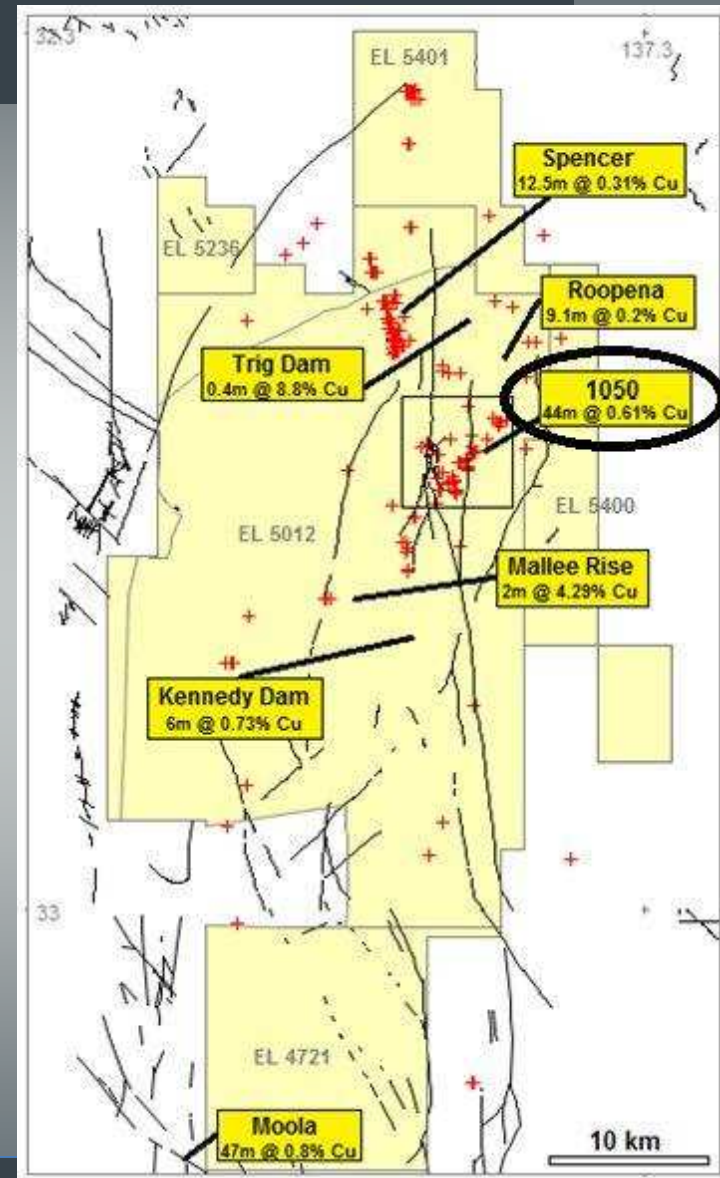
Historical exploration reveals potential

- 1960s to 1980s exploration focused on near-surface geochemical targeting
- Widespread near-surface copper

Limited basement drilling

- Ore-grade/near ore-grade copper
- WMC's Spencer prospect: extensive IOCG alteration
- Exploration limited by proposed Department of Defence expansion

Eastern Eyre Project (image right), showing historical drilling ($\geq 60\text{m}$ in red) and interpreted faults



Eastern Eyre Project

Untapped potential

Historical exploration reveals potential

- 1960s to 1980s exploration focused on near-surface geochemical targeting
- Widespread near-surface copper

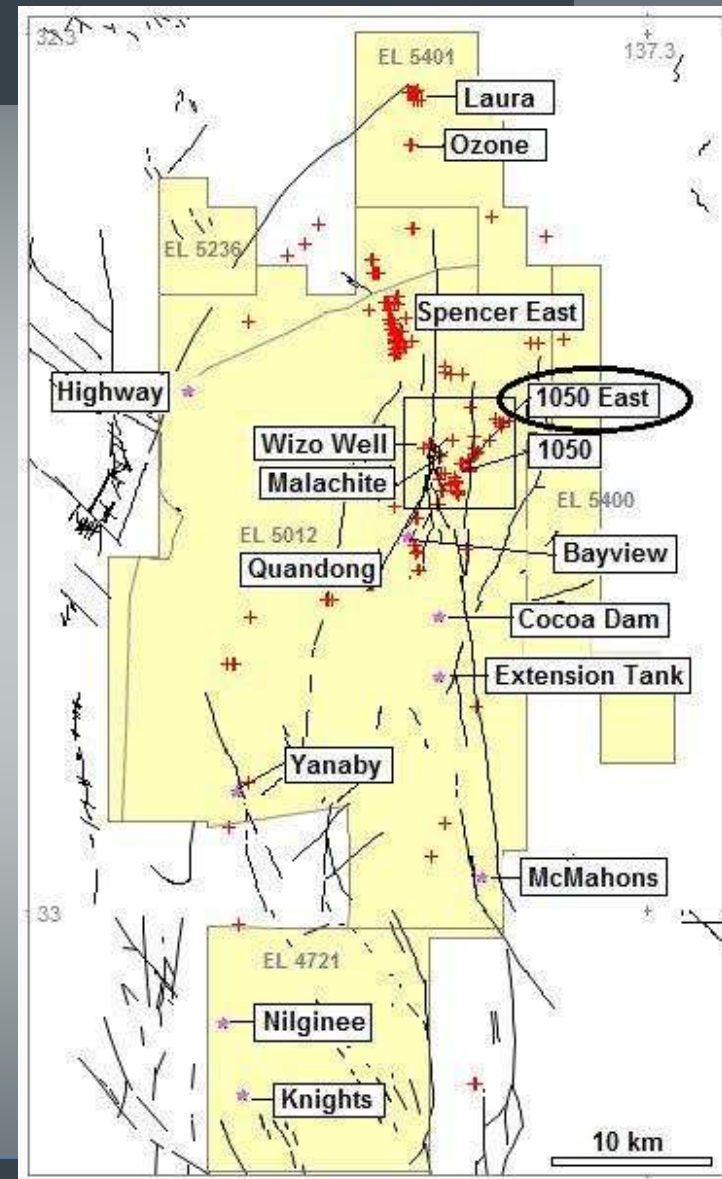
Limited basement drilling

- Ore-grade/near ore-grade copper
- WMC's Spencer prospect: extensive IOCG alteration
- Exploration limited by proposed Department of Defence expansion

Immediate, drill-ready targets

- Department of Defence restriction lifted
- First comprehensive exploration in +10 years

Eastern Eyre Project (image right), showing historical drilling ($\geq 60\text{m}$ in red), interpreted faults and Renascor prospects



1050 East

Extensive ore-grade Cu

High-grade copper in first prospect drilled

- New copper discovery in untested fault zone
- Massive high-grade copper sulphides, with results including:

13m at 1.45% Cu, 66 ppm Ag and 0.17% Co (from 215m) (EEDD012), including:

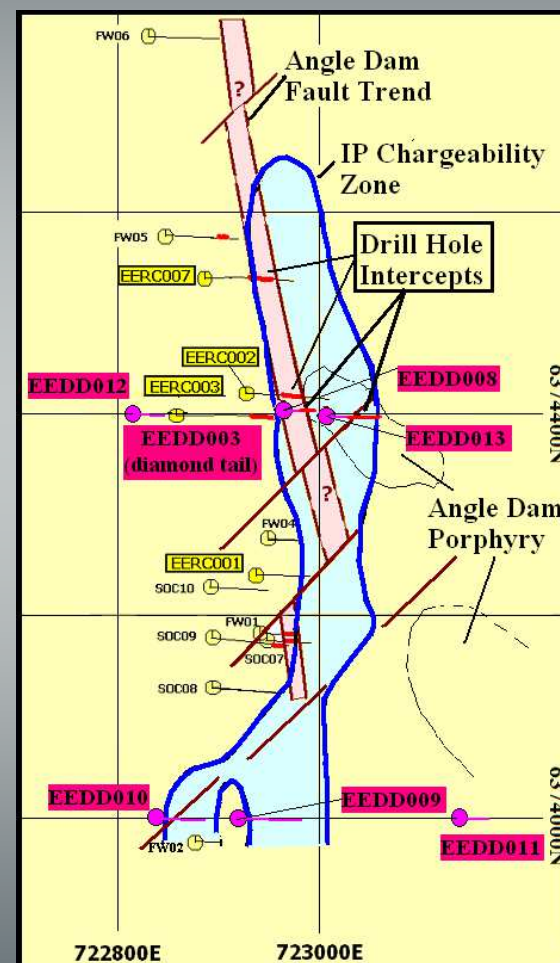
- ✓ 8m @ 2.2% Cu, 92 ppm Ag and 0.26% Co
from 217m, including
- ✓ 3m @ 4.0% Cu, 164 ppm Ag and 0.42% Co
from 218m

47m @ 0.59% Cu, 55 ppm Ag and 0.03% Co (from 172m) (EERCDD003), including:

- ✓ 2m at 3.5% Cu, 142 ppm Ag and 0.03% Co (from 196m)

4m @ 1.24% Cu and 65.8 ppm Ag (from 67m) and
9m @ 1.07% Cu and 29 ppm Ag (from 75m)
(EEDD013)

1050 East prospect, showing drill collar geology and IP summary plan



1050 East

EEDD012 - massive sulphides



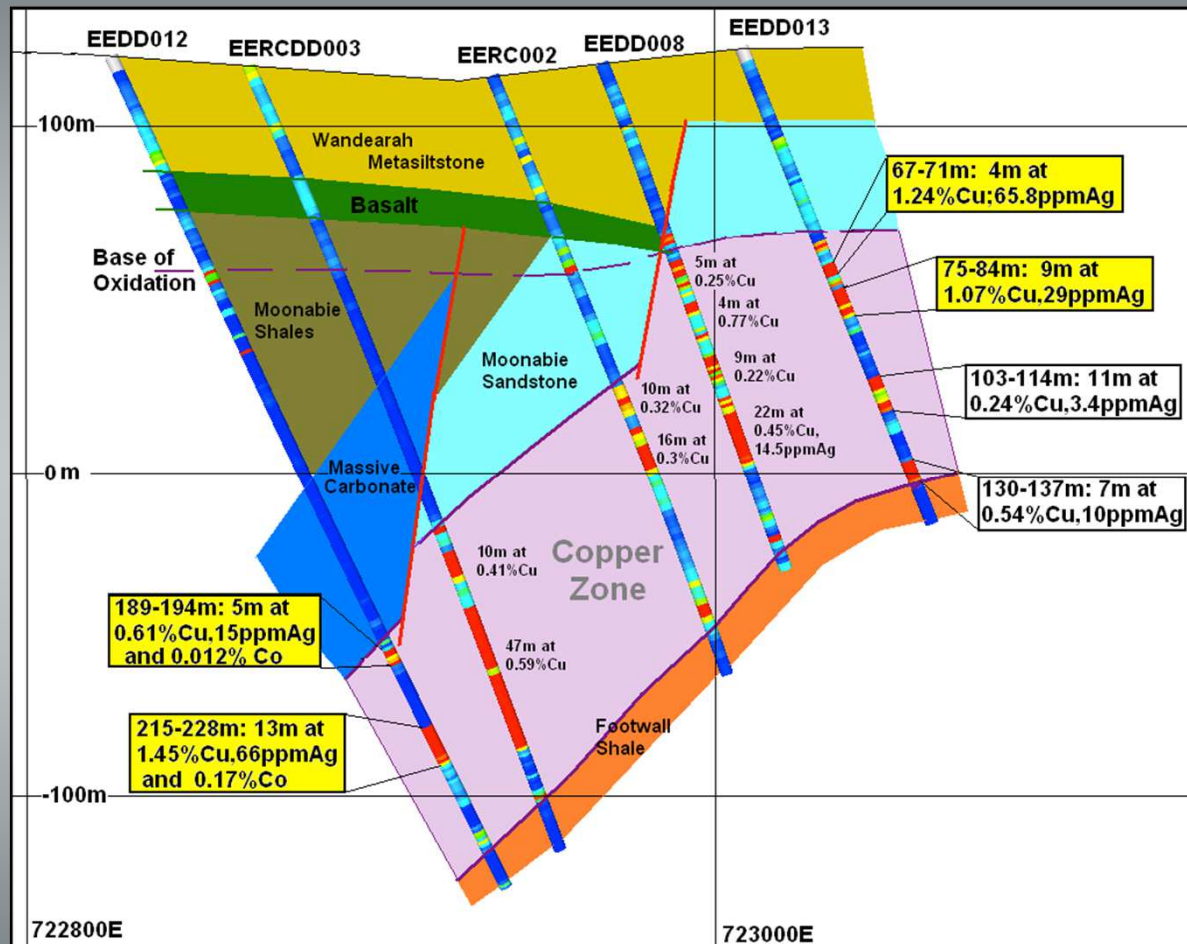
Hole EEDD012 – portion of massive sulphide interval from 217.5 metres to 221.5 metres

1050 East

Section 6374400N – drill results

- Extensive Cu in five holes
- Multiple massive sulphide zones
- 50m to 70m width by 180m down-dip extent

Extensive ore-grade copper in first prospect drilled



1050 East prospect, showing cross section of Section 6374400N

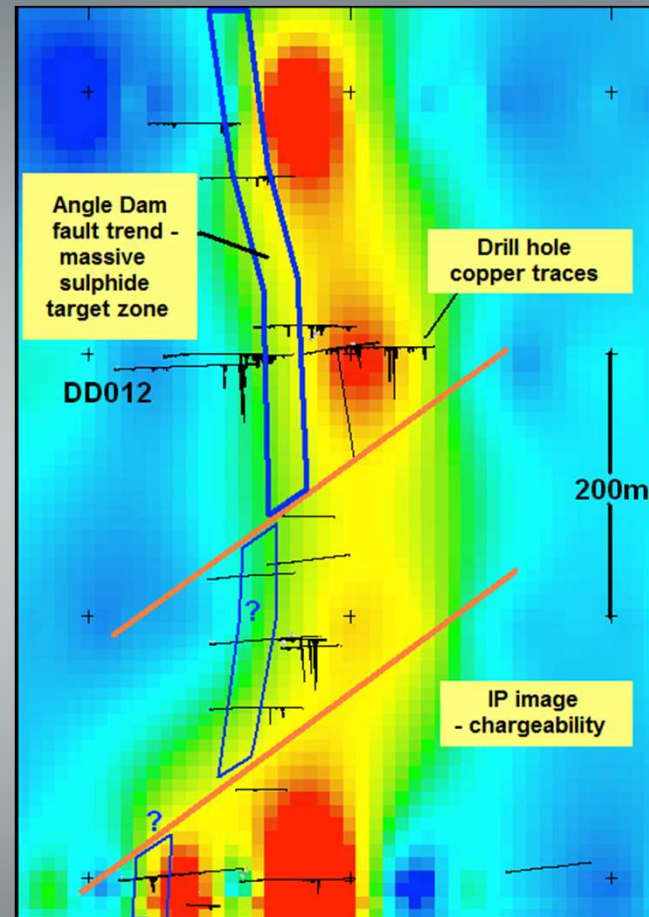
1050 East

Massive sulphide potential

- Significant scope for fault-controlled massive sulphide development
 - Steeply dipping Angle Dam fault zone immediately west of IP anomaly trend
 - Earlier drilling too shallow and too far east
 - Angle Dam fault zone extends +25 kilometers from 1050 East area

Next stage program:

- ✓ Ground geophysics/geochemistry
- ✓ Diamond drilling



1050 East prospect, showing existing drill locations and proposed massive sulphide target zone over induced polarisation image

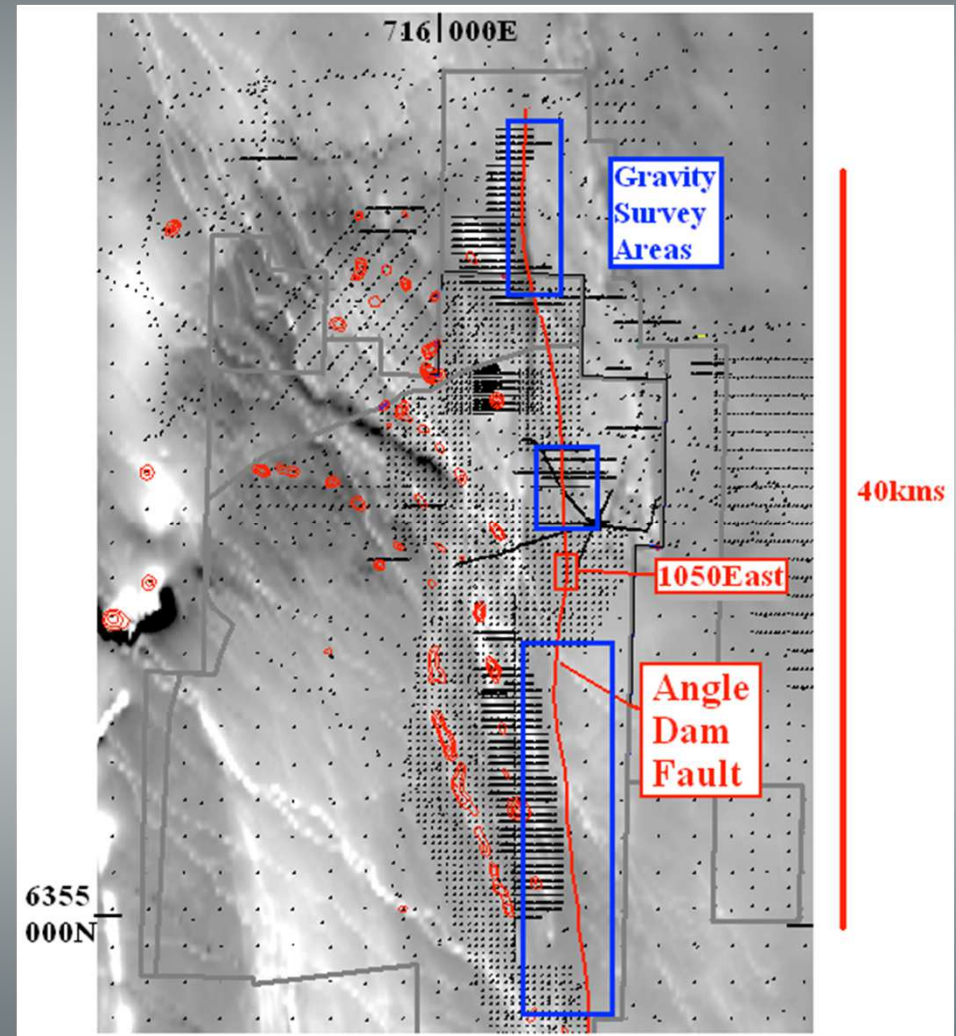
Eastern Eyre Project

Angle Dam targets

- Angle Dam fault
 - Control structure for new mineralised zone at 1050 East
 - Limited targeting outside of 1050 area
- Gravity
 - New gravity survey planned to define drill targets
 - To be used in conjunction with geochemical testing

Significant potential within untested, mineralised Angle Dam fault

Eastern Eyre Project (image right), showing magnetic image and interpreted gravity anomalies, existing gravity stations and proposed coverage for follow-up gravity survey

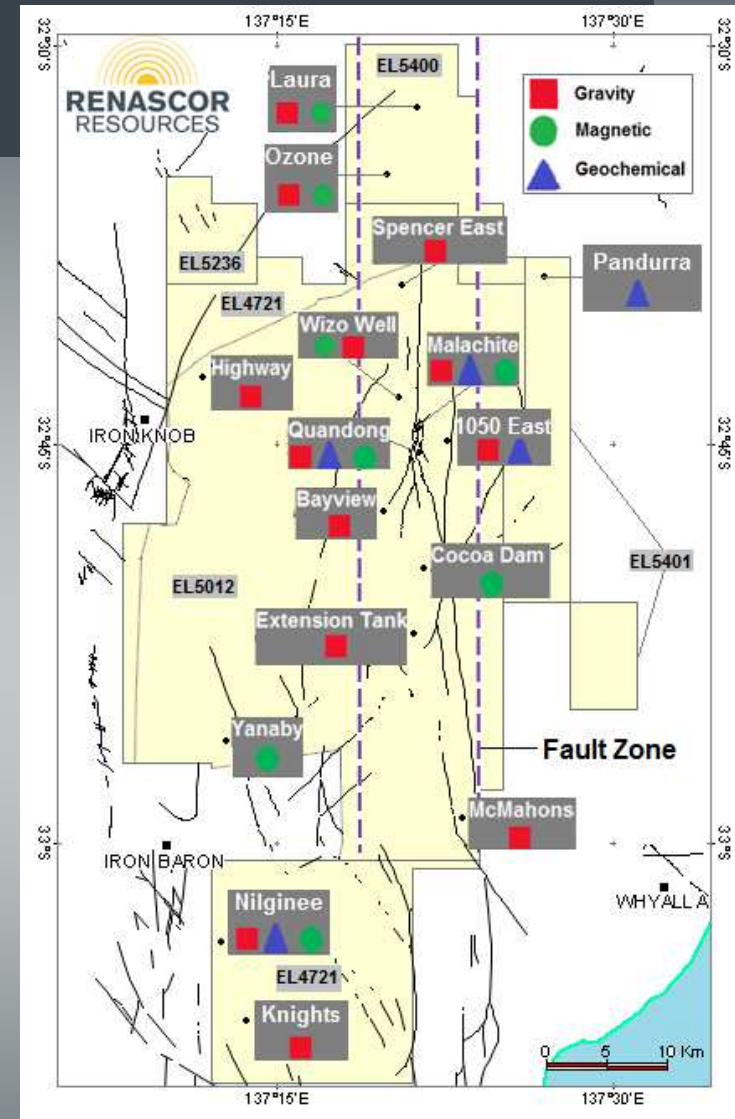


Eastern Eyre Project

Extensive prospectivity

- New copper zones
 - 1050 East new copper discovery
 - Targeted by combining results from historical RAB drilling in narrow 1050 area with:
 - ✓ Structural geology approach (fault zones)
 - ✓ IP and other geophysics
- Angle Dam fault
 - Control structure for new mineralised zone at 1050 East
 - Limited/no historical exploration outside of 1050 area

+25 km strike potential for more (and better) 1050 East prospects



Eastern Eyre Project, showing 1050 East and other prospects

Work Program

	2014								
	Q2			Q3			Q4		
Activity	A	M	J	J	A	S	O	N	D
1050 East/1050									
Induced polarisation survey									
Electromagnetic survey									
Geochemical sampling									
RC/diamond drilling									
Fault structure targets									
Gravity survey									
Geochemical sampling									
Induced polarisation survey									
RC/diamond drilling									

Note:

(1) Dates are indicative only and subject to change without notice

Summary

- New copper discovery at 1050 East
 - ✓ First drill program in Eastern Eyre project
 - ✓ Major copper system
 - ✓ Immediate follow-on drilling
- Pipeline of new, untested targets
- Imminent discovery opportunities

**Strong news flow from
active drill programs
through 2014**

