

# Renascor Resources Limited

ASX code: RNU

## Capital Raising Presentation New Discovery in the Olympic Dam Copper Belt

April 2014



# Important notice

## **Forward Looking Statements**

This Presentation may include statements that could be deemed “forward-looking” statements. Although Renascor Resources Limited (the “Company”) believes the expectations expressed in such forward-looking statements are based on reasonable assumptions, such statements are not guarantees of future performance and actual results or developments may differ materially from those expected in the forward-looking statements or may not take place at all.

## **No Offer to Sell or Invitation to Buy**

This Presentation is not, and should not be considered to, constitute any offer to sell, or solicitation of an offer to buy, any securities in the Company, and no part of this Presentation forms the basis of any contract or commitment whatsoever with any person. The Company does not accept any liability to any person in relation to the distribution or possession of this Presentation from or in any jurisdiction.

## **Disclaimer**

Whilst care has been exercised in preparing and presenting this Presentation, to the maximum extent permitted by law, the Company and its representatives make no representation, warranty or undertaking, express or implied, as to the adequacy, accuracy, completeness or reasonableness of this Presentation; accept no responsibility or liability as to the adequacy, accuracy, completeness or reasonableness of this Presentation; and accept no responsibility for any errors or omissions from this Presentation

## **Competent Persons Statement**

The exploration results in this Presentation, insofar as they relate to mineralisation, are based on information compiled by Mr G. W. McConachy (fellow of the Australasian institute of Mining and Metallurgy) who is a director of the Company. Mr McConachy has sufficient experience relevant to the style of mineralisation and type of deposits being considered to qualify as a competent person as defined by the 2012 edition of the Australasian Code for Reporting of Exploration Results, Mineral Resources and Ore Reserves (the JORC code, 2012 edition). Mr McConachy consents to the inclusion in the report of the matters based on his information in the form and context in which it appears.

# Investment summary



## New Copper Discovery

- High-grade mineralised system adjacent to untested fault zone
- Discovered in first target drilled – 1050 East prospect
- Potential for large-scale, near-surface copper resource
- 13m at 1.45% Cu, 66 ppm Ag and 0.17% Co (from 215m) (EEDD012)



## Dominant Ground Position

- +1,500 km<sup>2</sup> in Olympic Dam copper belt, South Australia
- Angle Dam and Roopena faults – each 40km to 50km largely untested



## Management Success in Target Region

- Strongly credentialed management with considerable experience
- Previous roles in South Australia
  - ✓ Discoveries: Four Mile uranium and Carrapateena IOCGU
  - ✓ Management of Heathgate (Beverley uranium mine)



## Major Follow-up Drill Targets

- Immediate drilling for shallow extensions to high-grade intersections
- Diamond drilling for high-grade massive sulphides

# Corporate profile

- ASX code RNU
- Shares on issue 114.8m
- Options 6.2m<sup>(1)</sup>
- Cash (31 Mar 14) ~\$1.0m
- Share price (15 Apr 14) \$0.073
- Market capitalisation \$8.4m
- Enterprise Value \$7.4m
- Top 20 shareholding 64%
- Board shareholding 47%

<sup>(1)</sup> Option breakdown: 5,450,000 options @ \$0.24, expiring between 31 December 2014 and 17 February 2015; 750,000 @ \$0.054, expiring 30 April 2016

## Board of Directors

Stephen Bizzell (Chairman)

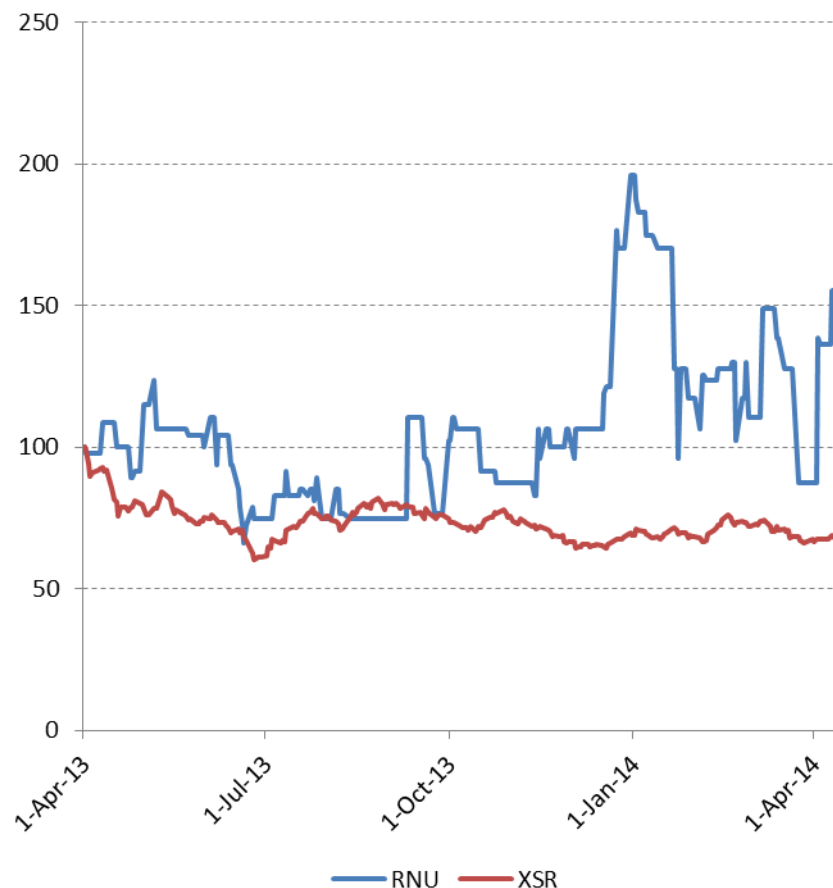
David Christensen (MD)

Geoff McConachy

Chris Anderson

Andrew Martin

## Renascor vs. ASX Small Resources



# Eastern Eyre Project Overview

Tenements & ownership	EL 4721, EL 5012 and EL 5236 (100%), ELAs 2008/00076 and 2010/00387 (option to earn 100%)
Location	Southern Gawler Craton
Area	1,534 km <sup>2</sup>
Primary target	Copper

- **New copper discovery at 1050 East**

- 1,400m x 400m shallow target zone
- High grade, massive sulphide zone
- Olympic Dam-aged
- Major upside in +25km of untested mineralised Angle Dam fault

- **Dominant copper ground position**

- Olympic Dam copper belt
- Near infrastructure
- Shallow cover sequence

## Key exploration hurdle cleared

- ✓ Lack of surface expression and cover depth in OD belt are main challenges
- ✓ Extensive shallow copper in initial drilling establishes copper pedigree of project area



### Prominent Hill

210 Mt @ 1.22% Cu  
from ~100m depth  
Discovered 2001

### Olympic Dam

9,500 Mt @ 0.82% Cu  
from ~300m depth  
Discovered 1975

### Carrapateena

800 Mt @ 0.80% Cu  
from ~500m depth  
Discovered 2005

### Hillside

330 Mt @ 0.6 % Cu  
from <50m depth  
Discovered 2008

Olympic Dam copper belt, showing location of Renascor's Eastern Eyre and other projects in relation to significant copper deposits; total resource figures from MESA Journal 68, Issue 1 -2013 and updated company releases

# 1050 East

## Extensive ore-grade Cu

### High-grade copper in first prospect drilled

- New copper discovery in untested fault zone
- Massive high-grade copper sulphides, with results including:

13m @ 1.45% Cu, 66 ppm Ag and 0.17% Co (from 215m) (EEDD012), including:

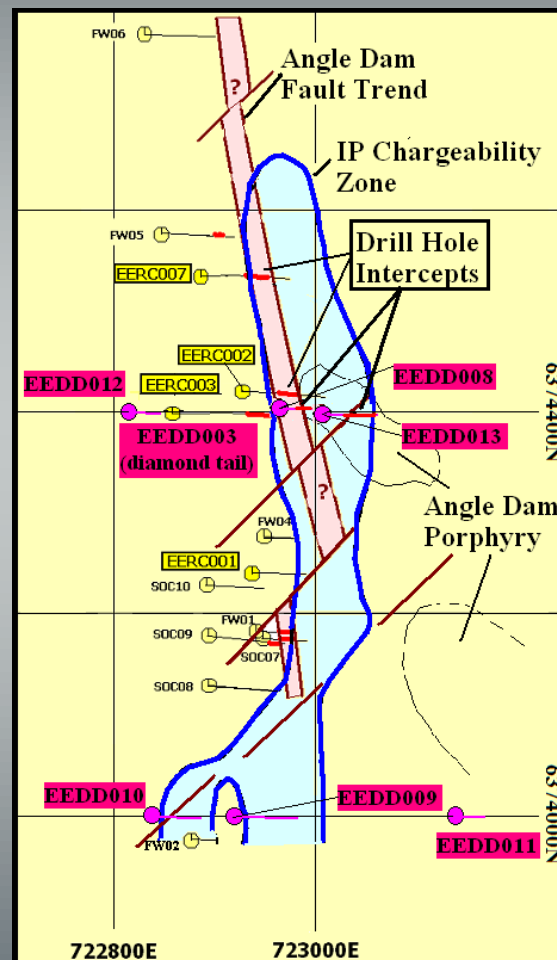
- ✓ 8m @ 2.2% Cu, 92 ppm Ag and 0.26% Co  
from 217m, including
- ✓ 3m @ 4.0% Cu, 164 ppm Ag and 0.42% Co  
from 218m

47m @ 0.59% Cu, 55 ppm Ag and 0.03% Co (from 172m) (EERCDD003), including:

- ✓ 2m @ 3.5% Cu, 142 ppm Ag and 0.03% Co  
(from 196m)

4m @ 1.24% Cu and 65.8 ppm Ag (from 67m) and  
9m @ 1.07% Cu and 29 ppm Ag (from 75m)  
(EEDD013)

1050 East prospect, showing drill collar geology and IP summary plan



# 1050 East

## Drill results: Multiple ore-grade Cu intersections

HOLE	TYPE	MGAE	MGAN	TOTAL DEPTH (meters)	FROM (metres)	TO (metres)	Interval (metres)	Copper Cu %	Silver (Ag) ppm	Cobalt (Co) ppm
EERC001	RC	722937	6374239	150.0	44	46	2	0.12	4	23
EERC002	RC	722927	6374420	200.0	60	64	4	0.47	29	187
					102	112	10	0.32	1	54
					116	132	16	0.30	11	126
EERCDD003	RC/DD	722858	6374398	252.6	146	148	2	0.89	27	139
					154	164	10	0.41	14	126
					172	216	47	0.59	23	292
					Including	196-198	2	3.50	142	273
EERC007	RC	722886	6374534	186.0	108	112	4	0.59	55	272
					122	142	20	0.35	14	133
EEDD008	DD	722961	6374400	159.4	60	65	5	0.25	8	96
					66	69	3	0.16	1	93
					73	77	4	0.77	4	102
					89	98	9	0.22	9	62
					103	125	22	0.45	14	28
					Including	116-117	1	1.78	67	44
					148	150	2	0.24	11	17
EEDD009	DD	722917	6373997	194.8	123	124	1	0.21	3	151
					127	128	1	0.21	1	57
					134	136	2	0.78	6	43
EEDD010	DD	722824	6373998	213.4	34	38	4	0.12	1	5
					56.6	68	11.4	0.55	22	17
EEDD011	DD	723120	6374004	115.8	Awaiting Assays					
EEDD012	DD	722821	6374388	243.0	189	194	5	0.61	15	123
					215	228	13	1.45	66	1,657
					Including	217-225	8	2.16	92	2,608
					Including	218-221	3	4.20	164	4,250
EEDD013	DD	723001	6374404	150.6	67	71	4	1.24	66	33
					75	84	9	1.07	29	81
					103	114	11	0.24	3	19
					130	137	7	0.54	12	10



# 1050 East

## EEDD012 - massive sulphides



Hole EEDD012 – portion of massive sulphide interval from 217.5 metres to 221.5 metres

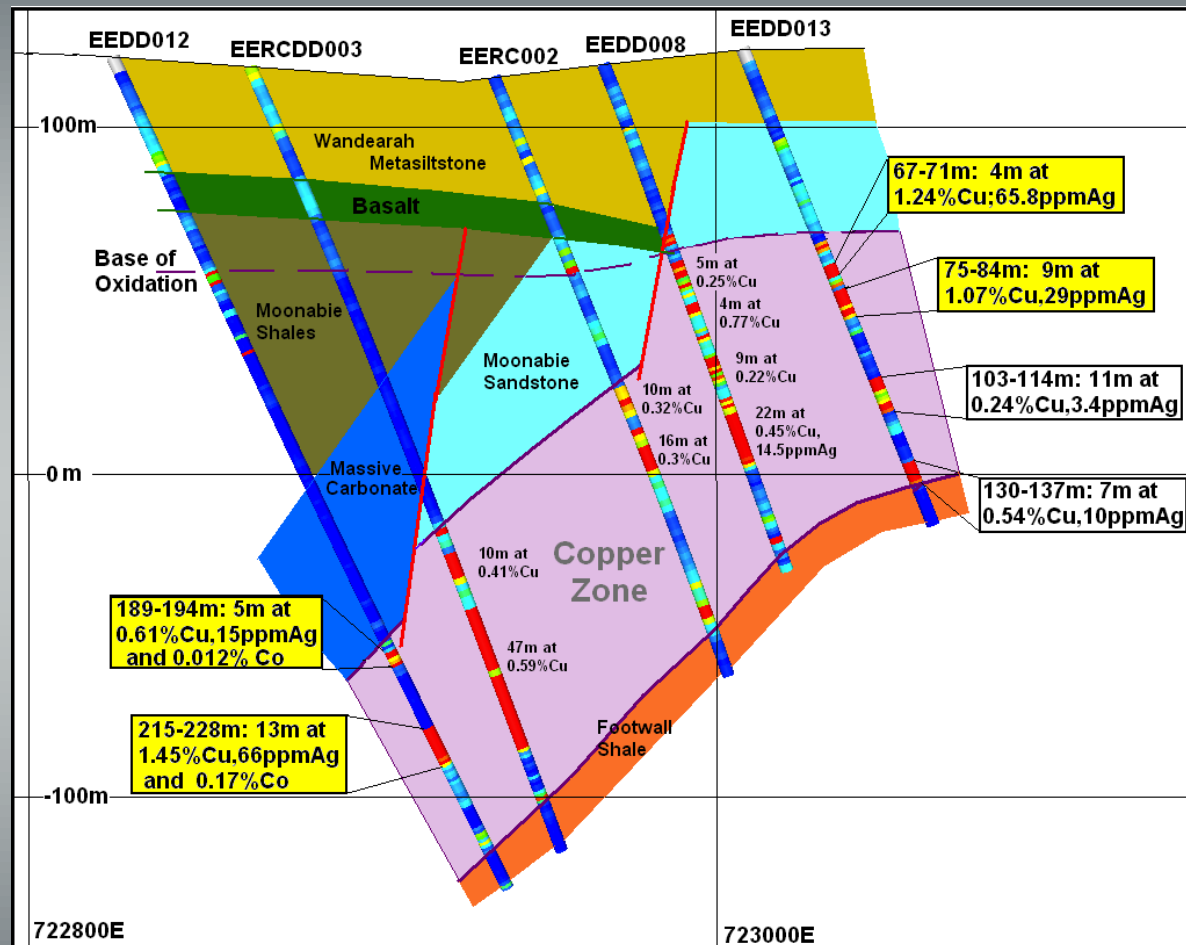


# 1050 East

## Section 6374400N – drill results

- Extensive Cu in all five Renascor holes
- Multiple massive sulphide zones
- 50m to 70m width by 180m down-dip extent
  - Best current intercepts at eastern and western limits of drilling (holes DD012 and DD013)

**Extensive ore-grade copper in first prospect drilled**



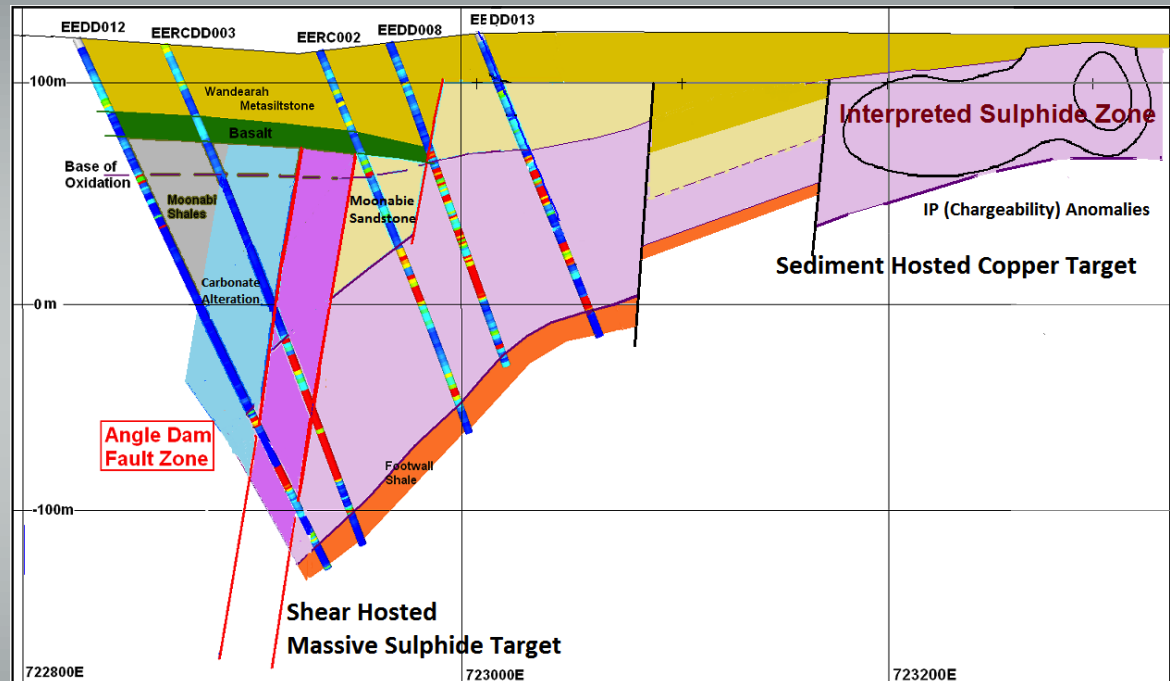
1050 East prospect, showing cross section of Section 6374400N

# 1050 East

## Section 6374400N – expansion targets

- Sediment-hosted copper
  - Shallow depth (from 50m)
  - 1,400m x 400m sulphide zone to the east
- Massive sulphide
  - Developed in untested Angle Dam fault zone
  - Increasing in grade and width at depth

**Immediate  
follow-on drill  
targets**



1050 East, showing cross section of Section 6374499N, with interpreted geology

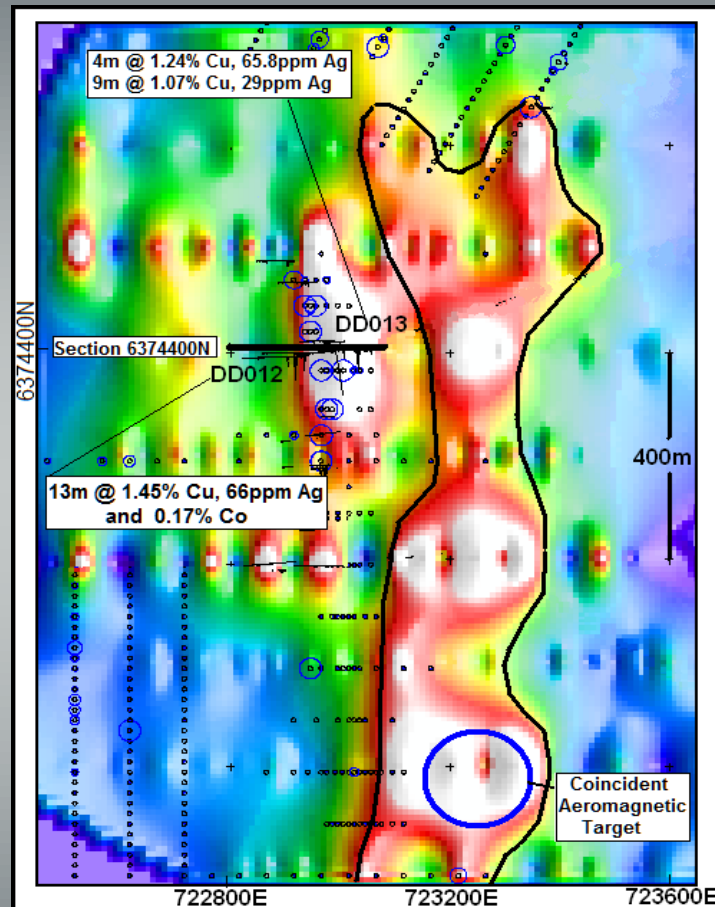
# 1050 East – Next Steps

## Shallow copper targets

- Copper Belt setting
  - Near-surface sediment hosted disseminated copper
- Immediate target zone
  - Continuation of mineralised trend
    - ✓ 1,400m x 400m, open to south
    - ✓ <40m depth, 40m-70m thickness
  - Untested
- Significant tonnage potential within immediate area

### Next stage program:

- ✓ RC drilling over shallow target zone



Plan view of 1050 East, showing extent of newly defined eastern IP chargeable zone at 50 metres depth and existing drill collars

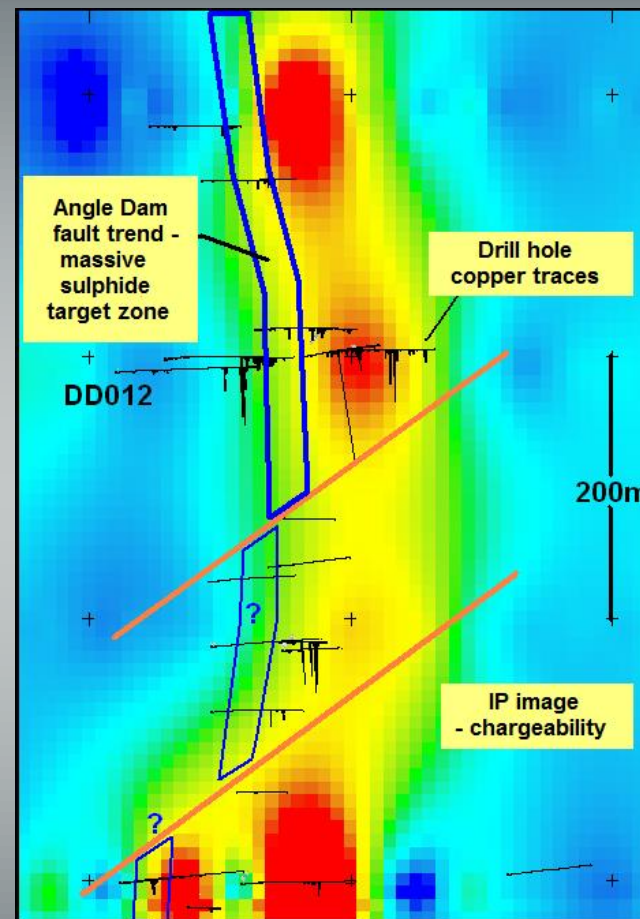
# 1050 East – Next Steps

## Massive sulphide potential

- Significant scope for fault-controlled massive sulphide development
  - Steeply dipping Angle Dam fault zone immediately west of IP anomaly trend
  - Earlier drilling too shallow and too far east
  - Angle Dam fault zone extends 20 kilometers from 1050 East area

### Next stage program:

- ✓ Ground geophysics/geochemistry
- ✓ Diamond drilling



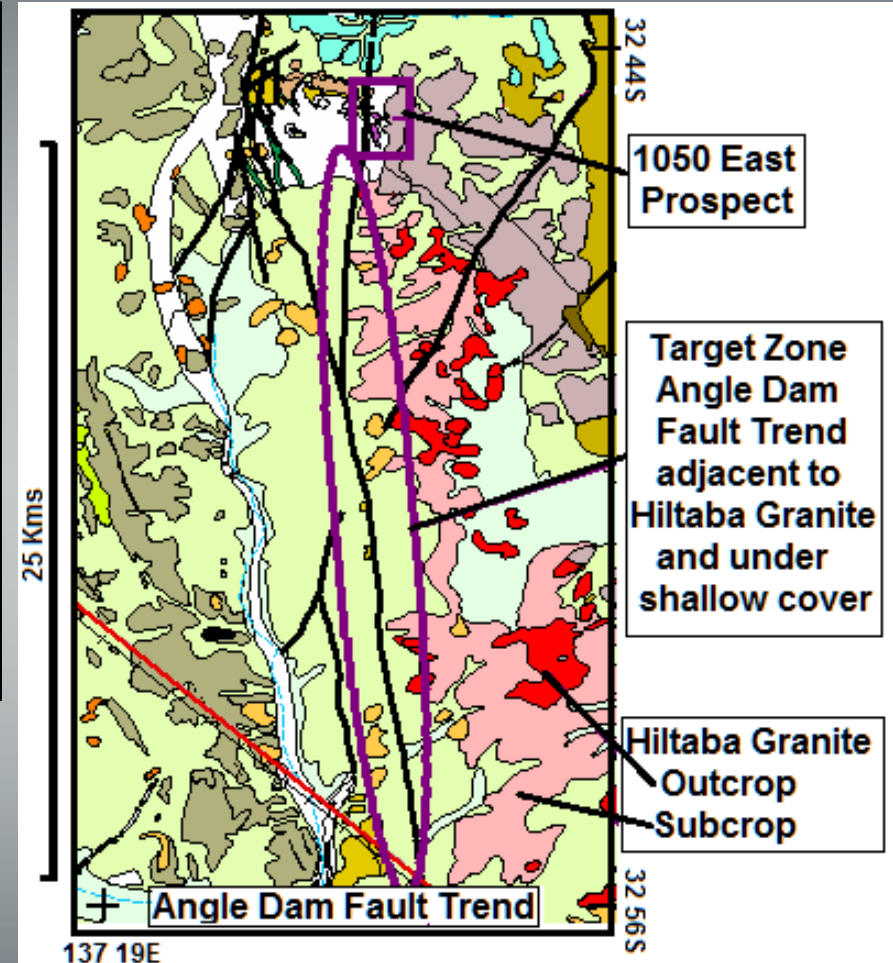
1050 East prospect, showing existing drill locations and proposed massive sulphide target zone over induced polarisation image

# Eastern Eyre Project

## Untested fault zones

- New copper zones
  - 1050 East new copper discovery
  - Targeted by combining results from historical RAB drilling in narrow 1050 area with:
    - ✓ Structural geology approach (fault zones)
    - ✓ IP and other geophysics
- Angle Dam fault
  - Control structure for new mineralised zone at 1050 East
  - **No targeting outside of 1050 area**

**+25 km strike potential for more (and better) 1050 East prospects**



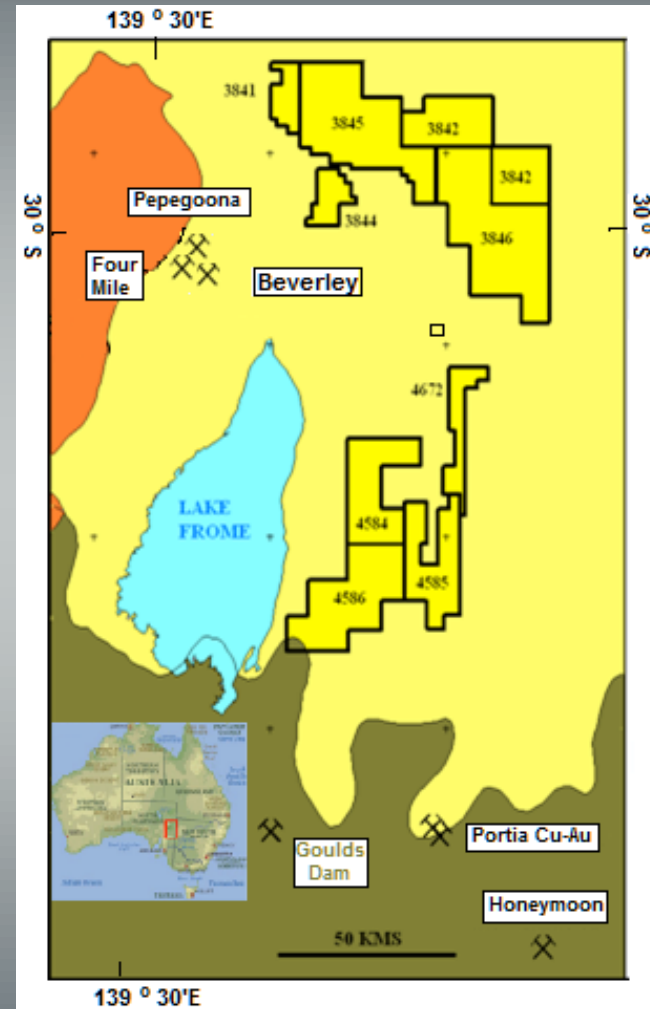
Eastern Eyre Project, showing targets zones along Angle Dam trend

# Uranium Projects Summary

- Renascor maintains strong uranium exploration portfolio
- Uranium market
  - Japan's policy to turn on nuclear reactors may trigger price recovery

**Strategy: limit current spend, while maintaining upside**

Map of Renascor's Frome Project and significant uranium nearby deposits





# Offer Details

## Placement

- Firm commitments received from professional and sophisticated investors to raise approximately \$0.6 million through share placement at \$0.05 per share
- Issue price represents a:
  - 22.3% discount to the 5 day VWAP
  - 22.8% discount to the 10 day VWAP
  - 31.5% discount to the last close price
- Board and management have committed to subscribe for approximately \$0.2 million in the placement (subject to shareholder approval)
- Bizzell Capital Partners was lead manager to the placement

## Share Purchase Plan

- Share Purchase Plan to existing shareholders to raise up to approximately a further \$0.9 million
- Allows eligible shareholders (as at the record date) the opportunity to purchase new shares up to a maximum of \$15,000 on the same terms as the placement

# Use of funds – through 2014

Sources	
Available cash as at 31 March 2014	~\$1.0m
Offer proceeds <sup>(1)</sup>	~\$1.5m
<b>Total</b>	<b>\$2.5m</b>

Uses <sup>(1)</sup>	
Exploration and drilling activities	\$1.6m
Corporate, finance and administration	\$0.7m
Working capital	\$0.1m
Expenses of the Offer	\$0.1m
<b>Total</b>	<b>\$2.5m</b>

Notes:

- (1) Proceeds from the Offer assume \$1,5 million is raised under the a placement and share purchase plan. If less is raised under placement and share purchase plan the board of RNU reserves the right to reapply any funds from the capital raising to maximise shareholder value.

# Work Program

Activity	2014								
	Q2			Q3			Q4		
	A	M	J	J	A	S	O	N	D
<b>1050 sediment-hosted copper</b>									
Data review									
IP									
RC drilling									
<b>1050 massive sulphide</b>									
Geophysics/geochemistry									
Data review									
Diamond drilling									
<b>Angle Dam targets</b>									
Geophysics/geochemistry									
RC/Diamond drilling									

Note:

(1) Dates are indicative only and subject to change without notice

# Summary

- New copper discovery at 1050 East
  - ✓ First drill program in Eastern Eyre project
  - ✓ Immediate follow-on drilling to test for:
    - Shallow sediment-hosted copper
    - High-grade, massive sulphides
- Pipeline of new, untested targets

**Strong news flow from  
active drill programs  
through 2014**

